



**Open Call for Grant Applications:
Technology Transfer Feasibility (TTF)
and
Technology Transfer/Commercialization Partnership
(TTCP) Grants for Cancer
Fiscal Year 2011-2012**

**Florida Department of Health
Office of Public Health Research
Tallahassee, Florida**



TABLE OF CONTENTS

**Bankhead-Coley Cancer Research Program
Open Call for Grant Applications: TTF and TTCP Grants, FY 2011-2012**

PART I. OVERVIEW6

1. INTRODUCTION6

2. HIGHLIGHTS8

3. GRANT COMPETITION PROCESS OVERVIEW9

4. SCHEDULE OF IMPORTANT DATES10

Table 1. Schedule of Important Dates 10

PART II. ELIGIBILITY AND APPLICATION REQUIREMENTS11

1. CANCER-RELATEDNESS.....11

2. TECHNOLOGY TRANSFER FEASIBILITY (TTF) GRANT MECHANISM INFORMATION.....11

A. Application and Award Timeline..... 12

B. Award Amount and Duration 13

C. Special TTF Application Requirements 13

3. TECHNOLOGY TRANSFER/COMMERCIALIZATION PARTNERSHIP (TTCP) GRANT MECHANISM INFORMATION.....14

A. Application and Award Timeline..... 14

B. Award Amount and Duration 15

C. TTCP Partnership and Effort Requirements 15

D. Special TTCP Application Requirements 16

4. ELIGIBILITY REQUIREMENTS (TTF AND TTCP).....16

A. Eligible Applicants 16

B. Guidelines for Florida Biomedical Research Advisory Council Member Participation 17

C. Duplicate Applications and Overlap Limits 18

D. Application Resubmission 19

5. REQUIRED TTF GRANT APPLICATION COMPONENTS.....20

Table 2. TTF Grant Application Components and Page Limits 20

6. REQUIRED TTCP GRANT APPLICATION COMPONENTS23

Table 3. TTCP Grant Application Components and Page Limits..... 23

7. ALLOWED AND DISALLOWED COSTS (TTF AND TTCP)27

A. Allowed Direct Costs 27

B. Allowed Indirect Costs..... 28

C. Disallowed Costs 28

8. INQUIRIES AND CONTACTS (TTF AND TTCP).....28

A. Programmatic Questions About This Call..... 28

B. Technical Questions About the Online Application..... 29

9. REQUIREMENTS FOR PROTECTING INTELLECTUAL PROPERTY (TTF AND TTCP)	29
10. DEFINITIONS (TTF AND TTCP)	30
PART III. INSTRUCTIONS FOR APPLICATION PREPARATION AND SUBMISSION	34
1. GENERAL INSTRUCTIONS FOR APPLICATION SUBMISSION	34
A. <i>Technical Assistance</i>	34
B. <i>Online Registration and Application Submission</i>	34
C. <i>General Application Guidelines</i>	35
2. GENERAL PROJECT INFORMATION	36
A. <i>Project Information</i>	36
B. <i>Principal Investigator Information</i>	37
C. <i>Institution PI Qualifications</i>	39
D. <i>Administrative Official for Applicant Organization</i>	39
E. <i>Research Classification</i>	39
F. <i>Research Keywords</i>	40
3. GENERAL AUDIENCE ABSTRACT	40
4. SCIENTIFIC ABSTRACT	40
5. CANCER-RELATEDNESS	40
6. KEY PERSONNEL	41
7. SMALL BUSINESS INFORMATION (TTCP APPLICATIONS ONLY)	41
8. DISPARATE GROUPS	41
9. MAIN APPLICATION BODY	41
A. <i>Table of Contents</i>	42
B. <i>Alternative Funding Challenges (TTCP Applications Only)</i>	42
C. <i>Resources</i>	42
D. <i>Introduction to Resubmitted Application</i>	42
E. <i>Research/Project Plan</i>	42
F. <i>Partnership Information (TTCP Applications Only)</i>	44
G. <i>Literature Cited</i>	44
H. <i>Human Subjects</i>	44
I. <i>Vertebrate Animals</i>	46
J. <i>Consultants</i>	46
K. <i>Survey Instruments (Optional)</i>	46
10. BUDGET	47
A. <i>Budget Form Instructions</i>	47
B. <i>Budget – Page One</i>	47
C. <i>Budget Narrative/Justification</i>	48
11. BIOGRAPHICAL SKETCHES	50
12. RESEARCH MILESTONE CHART	50
13. OTHER SUPPORT	51

14. TECH TRANSFER SUPPORT FORM (TTF APPLICATIONS ONLY)	53
15. PARTNER LETTER OF SUPPORT (TTCP APPLICATIONS ONLY)	53
16. CERTIFICATE OF STATUS OR AUTHORIZATION FROM DIVISION OF CORPORATIONS (TTCP APPLICATIONS ONLY)	54
17. MISCELLANEOUS LETTERS OF SUPPORT (OPTIONAL)	54
18. COVER/CERTIFICATION – SIGNED PAGE 1	54
19. IRB AND IACUC APPROVALS	55
A. <i>IRB Assurance Information (Human Subjects Used)</i>	55
B. <i>IACUC Assurance Information (Vertebrate Animals Used)</i>	55
PART IV. AFTER APPLICATION SUBMISSION	57
1. CHANGES TO A SUBMITTED APPLICATION	57
2. EVALUATION OF APPLICATIONS	57
A. <i>Administrative Review</i>	57
B. <i>Peer Review</i>	58
C. <i>Programmatic Review</i>	59
D. <i>Evaluation Reports</i>	60
3. NOTIFICATION OF FUNDING DECISION	60
4. REQUESTS FOR RE-CONSIDERATION	60
5. GRANTEE REQUIREMENTS	61
A. <i>Terms and Conditions</i>	61
B. <i>Grantee Reporting Requirements</i>	61
C. <i>Open Innovation and Sharing of Publication-Related Materials, Data, and Software</i>	61
APPENDIX A. REDUCING PDF FILE SIZES	62
APPENDIX B. TTF MAIN APPLICATION BODY FORM	64
APPENDIX C. TTCP MAIN APPLICATION BODY FORM	66
APPENDIX D. BUDGET FORM	68
APPENDIX E. RESEARCH MILESTONE CHART FORM	70
APPENDIX F. OTHER SUPPORT FORM	72
APPENDIX G. TECH TRANSFER SUPPORT FORM	73

NOTE: Only applications received through the GrantEase™ online application system will be accepted.

Applicants must register online at www.floridabiomed.com/login.html to be able to submit an application. Previously registered applicants will have to re-register, although the same user name and password can be used. See [Part III](#) for application preparation and submission instructions.

Direct all questions about the online application process and related issues (e.g. username and password problems) to:

Technical Support
Lytmos Group
(816) 347-9449 (phone)
techsupport@floridabiomed.com (E-mail)

If you experience technical difficulties during the final hours of the competition, please contact technical support immediately for assistance.

PART I. OVERVIEW

1. Introduction

The William B. “Bill” Bankhead, Jr., and David Coley Cancer Research Program (hereafter referred to as “the Program”) was established in section 381.922, *Florida Statutes* (s. 381.922, *F.S.*) in 2006. The purpose of the Program is to “advance progress towards cures for cancer through grants awarded through a peer-reviewed, competitive process.” The legislative intent of the Program is to significantly impact Florida’s high cancer burden, reducing both cancer incidence and mortality, while advancing scientific endeavors in the state and making Florida a world-class leader in cancer research and treatment. Since the 2009-2010 fiscal year (FY), the Program has received a portion of the revenue deposited into the Health Care Trust Fund from the increased cigarette user fee imposed by s. 210.02, *F.S.*

The Florida Department of Health, through the Office of Public Health Research (hereafter referred to as “the Department”) administers the Program with the support of a contracting partner, the Lytmos Group, Inc. The Program also solicits recommendations and suggestions on policy alternatives from the Biomedical Research Advisory Council consistent with s. 20.435 and s. 381.922, *F.S.*

The Program has three long-term goals:

1. Significantly expand cancer research capacity in the State.
2. Improve both research and treatment through greater participation in clinical trials networks.
3. Reduce the impact of cancer on disparate groups.

In pursuit of these goals, **the Program is soliciting Technology Transfer Feasibility Grant and Technology Transfer/Commercialization Partnership Grant applications** (hereafter referred to as “TTF Grant” and “TTCP Grant”) from eligible institutions to fund initiatives addressing the prevention, diagnosis, treatment, and/or cure of cancer.

The Program has historically operated in general accord with the policies and procedures for extramural funding employed by the National Institutes of Health (NIH) and looks to the NIH as a source of standard practices. To protect the credibility of the Program and to ensure public trust, this general accord includes but is not limited to similar expectations of adequate institutional control and oversight to guard against financial conflict of interest, scientific misconduct, scientific and financial overlap and the mismanagement of funds, the protection of human and vertebrate animals, and compliance with applicable state and federal laws or regulations.

Regarding intellectual property, all materials submitted to the Department are subject to the provisions of Art. 1, Sec. 24, Florida Constitution and Chapter 119, F.S., Florida's public records law. These laws grant a right to inspect any public record to anyone upon request. All Program materials, including applications, are public record. Refer to Part II, [Chapters 9](#) for instructions on how to properly identify confidential/proprietary information.

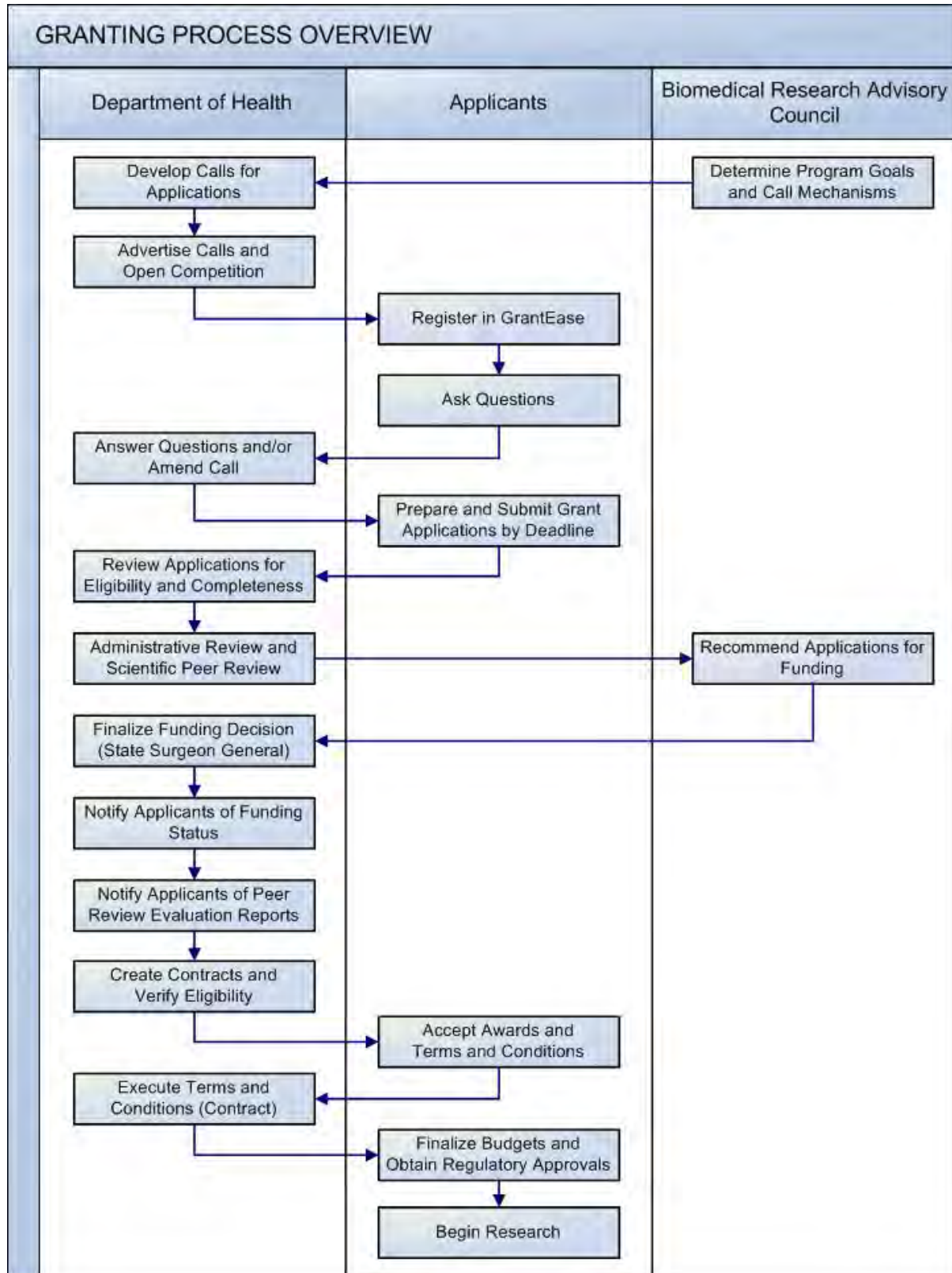
All awards in response to this Open Call for Grant Applications are subject to the availability of funds and spending authority provided by the Florida Legislature. By submitting a grant application pursuant to this Open Call for Grant Applications, all applicants acknowledge and consent to this condition.

After awards are made, each grantee must sign a contract, called the "Terms and Conditions," agreeing to certain legal requirements of the award. An example of the "Terms and Conditions" is located on the Program website and can be accessed by clicking on the following link: [Terms and Conditions \(www.floridabiomed.com/bc_call\)](http://www.floridabiomed.com/bc_call). The "Terms and Conditions" are non-negotiable and acceptance is required as part of the grant award process. The Program reserves the right to change or modify the "Terms and Conditions" as needed. By submitting a grant application pursuant to this Open Call for Grant Applications, all applicants acknowledge this requirement. The "Terms and Conditions" also include the post-award schedule of deliverables.

2. Highlights

- The Technology Transfer Feasibility (TTF) Grant offers early stage funding to eligible universities and research institutes in order to develop intellectual property and improve its commercial potential and competitiveness for further development activities. Recipients of a TTF award remain eligible to apply later for a TTCP Grant for the same project.
- Technology Transfer/Commercialization Partnership (TTCP) Grants are offered to eligible universities and research institutes and may be applied for independent of the TTF Grant offering. TTCP Grants are for projects further along the development continuum, but not yet competitive for federal funding such as is offered through various Small Business Innovation Research (SBIR) or Small Business Technology Transfer (STTR) programs.
- This Open Call for Grant Applications will remain open through March 16, 2012 or until all available funds are exhausted. Applications for TTF and TTCP Grants will be accepted on a continuous basis during the Open Call and will be considered in the order in which they are received.
- For Fiscal Year 2011-2012, the Program intends to set aside a limited amount of funds for TTF and TTCP grants submitted in response to this Open Call for Grant Applications. Grants will be awarded in the order received on an ongoing basis, based on the peer review scores and until all set aside available funds are exhausted. Applications that are not funded as a result of unacceptable merit and/or cancer-relatedness scores are allowed one resubmission. All applications that are fundable but unfunded due to budgetary constraints will be carried forward for up to one year and may be awarded if funds become available.
- This document has been reorganized to align with the application process.
- All instructions for filling out the application are included in this Open Call for Grant Applications, either in the main body or the appendices.
- This Open Call for Grant Applications contains guidelines limiting the participation of members of the Florida Biomedical Research Advisory Council. See [Part II, Chapter 4 B](#).
- Applicants are encouraged to check the Program website at www.floridabiomed.com regularly throughout the application, peer review, and award processes for Program announcements, Open Call amendments, and answers to programmatic questions.

3. Grant Competition Process Overview



4. Schedule of Important Dates

Table 1. Schedule of Important Dates		
ACTIVITY	DATES	IMPORTANT INFORMATION
Competition opens for online applications	July 15, 2011	Visit www.floridabiomed.com and register for access to an online application.
Written questions accepted	QUESTIONS MAY BE SUBMITTED JULY 15, 2011 TO MARCH 2, 2012	E-mail questions to: bcquestions@floridabiomed.com
Answers posted to written questions	Updates will be made frequently to the website. One question and answer web document will be used as long as this Open Call is open.	Find questions and answers at http://floridabiomed.com/bc_ga.html
Online applications due	APPLICATIONS MAY BE SUBMITTED JULY 15, 2011 TO MARCH 16, 2012	Online applications must be submitted through www.floridabiomed.com
Proposal evaluation summaries available to applicants online	The Principal Investigator will be notified when the evaluation report is available.	For all eligible and qualified applications, the evaluation report will be available to the applicant by logging in at www.floridabiomed.com .
Awards announced	Within 60 days of application submission until funds are no longer available.	Award letters will be e-mailed to the Administrative Official and the Principal Investigator.

PART II. ELIGIBILITY AND APPLICATION REQUIREMENTS

1. Cancer-Relatedness

All applicants must clearly demonstrate how the proposed project is relevant to cancer. **Biomedical and biotechnological research** must address the etiology, pathogenesis, prevention, diagnosis, treatment, and/or cure of cancer. **Social scientific and behavioral** proposals must address the development, implementation, and/or evaluation of existing or novel approaches to cancer prevention, diagnosis, or treatment. Proposals that do not or cannot demonstrate a close relationship with advancing progress toward cures for cancer or endeavor to dramatically improve cancer morbidity and mortality will not be funded.

2. Technology Transfer Feasibility (TTF) Grant Mechanism Information

The goals of the TTF grant mechanism are to: stimulate technology transfer activities for promising research discoveries that could lead to innovations in the prevention, diagnosis, treatment, and/or cure of cancer; and strengthen a project's economic feasibility and commercialization prospects. It is not the intent of the Program to fund projects at the idea stage, nor to replicate or replace funding from other traditional sources such as the National Institutes of Health, but rather to provide funding to fill gaps left by those traditional sources, thus this grant is designed to be a precursor to the TTCP Grant mechanism and/or federal funding such as the Small Business Innovation Research (SBIR) or Small Business Technology Transfer (STTR) programs.

The primary objective is to assist investigators in moving promising research findings toward commercialization. The TTF Grant offers early stage funding to eligible universities and research institutes in order to develop intellectual property and improve its commercial potential and competitiveness for further development activities, including company formation or partnering with private interests. Projects should be designed to establish the technical/scientific merit and feasibility needed to attract commercial interest. Unlike the TTCP Grant, there is no requirement for the participation of a small business partner.

Successful TTF grantees may be eligible for additional funding from this Program through the TTCP Grant mechanism to support commercialization partnerships.

Example projects appropriate for the TTF Grant mechanism include:

- Preliminary animal model work necessary to advance the research toward commercial viability.
- Developing and/or improving biomedical equipment useful in the prevention, diagnosis, treatment, and/or cure of cancer.

- Developing and/or improving assays useful in the prevention, diagnosis, treatment, and/or cure of cancer.
- Developing new therapies and drugs for cancer.
- Developing methods, materials, models, or simulations necessary for translating research findings into standard practices for the prevention, diagnosis, treatment, and/or cure of cancer.

Eligible projects must satisfy all of the following requirements:

- The technology/invention is protected or patentable.
- A patent search has been completed with no identical inventions found.
- A literature search has been completed and come back clean.
- The technology/invention is free from prior disclosure(s) that would bar patentability.
- The technology/invention is free from any conflicting prior rights.
- The technology/invention is at a proof of concept stage.
- The technology/invention is the subject of ongoing and proactive research by the scientist.
- Potential products or services from the technology/invention have been identified for which there is identifiable market need.

A. Application and Award Timeline

1. Applications for TTF grants will be accepted on a continuous basis until March 16, 2012.
2. For Fiscal Year 2011-2012, the Program intends to set aside a limited amount of funds for TTF and TTCP grants submitted in response to this Open Call for Grant Applications. Fundable applications will be awarded in the order received until all available funds are exhausted. All applications that are fundable but unfunded due to budgetary constraints will be carried forward for up to one year and may be awarded if funds become available.
3. Award status will be announced within approximately 60 days of application submission.

B. Award Amount and Duration

1. The maximum award is \$100,000 in total costs (including direct and indirect costs).
2. Awards are for 12 months.
3. TTF grant start dates are dependent on the date of award notification, and will generally begin on the first day of the month following award notification.
4. TTF grants are not eligible for subsequent non-competitive continuation support.
5. TTF grantees meeting their project milestones may apply for TTCP funding to continue the project, either in response to the current or future Calls, as long as all eligibility criteria for that mechanism are met.

C. Special TTF Application Requirements

A **Technology Transfer Advisor Statement of Support Form** from an eligible technology transfer advisor/officer must be provided. The technology transfer advisor form is included in the online application and must include:

- A checklist showing compliance with eligibility requirements.
- An explanation of why the proposed technology/invention has above-average market potential.
- An overview of the development progress and needs of the applicant in transferring the identified technology/invention out of an academic setting.
- A statement of how the grant would advance the technology/invention in a critical way to make it substantially more marketable, assuming the experiment is successful and why other sources of funding are not available for this purpose.
- A description of the technology transfer advisor's plan for working with the project PI, including the technology transfer advisor's role and the degree/type/frequency of interaction.

For purposes of this program, eligible **technology transfer advisors** shall consist of staff members of the technology transfer office associated with the applicant institution, or if no such office exists, an individual whose official job responsibilities include traditional technology transfer responsibilities.

3. Technology Transfer/Commercialization Partnership (TTCP) Grant Mechanism Information

The intent of the TTCP grant mechanism is to: encourage the collaboration of investigators at eligible institutions and small businesses; stimulate technology transfer activities for promising research discoveries that could lead to innovations in prevention, diagnosis, treatment, and/or cure of cancer; and strengthen a project's economic feasibility and commercialization prospects. It is not the intent of the Program to fund projects at the idea stage, nor to replicate or replace funding from other traditional sources such as the National Institutes of Health, but rather to provide funding to fill gaps left by those traditional sources. Therefore, the TTCP Grant is designed to be a precursor to federal funding such as the Small Business Innovation Research (SBIR) and Small Business Technology Transfer (STTR) programs. It is incumbent upon the applicant to clearly show why funding from these sources is not available for the proposed project.

Projects should be designed to further develop the technical/scientific merit and establish the commercial feasibility in order to become competitive for future financial support, such as SBIR/STTR federal funding or commercial investment.

Collaboration between a small business and an eligible institution is required. Only an eligible institution may be the applicant.

Projects appropriate for this grant mechanism may include, but are not limited to:

- Developing and/or improving biomedical equipment useful in the prevention, diagnosis, treatment, and/or cure of cancer.
- Developing and/or improving assays useful in the prevention, diagnosis, treatment, and/or cure of cancer.
- Developing new therapies and drugs for cancer.
- Developing methods, materials, models, or simulations necessary for translating research findings into standard practices for the prevention, diagnosis, treatment, and/or cure of cancer.

A. Application and Award Timeline

1. Applications for TTCP grants will be accepted on a continuous basis until March 16, 2012.
2. For Fiscal Year 2011-2012, the Program intends to set aside a limited amount of funds for and TTF and TTCP grants submitted in response to this Open Call for Grant Applications. Fundable applications will be awarded in the order received until all available funds are exhausted. All applications that are fundable but unfunded due to budgetary constraints will be carried forward for up to one year and may be awarded if funds become available.
3. Award status will be announced within approximately 60 days of application submission.

B. Award Amount and Duration

1. The maximum award is \$100,000 in total costs (including direct and indirect costs).
2. Awards are for 12 months.
3. TTCP Grant start dates are dependent on the date of award notification, and will generally begin on the first day of the month following award notification.
4. TTCP grants are not eligible for subsequent non-competitive continuation support.

C. TTCP Partnership and Effort Requirements

Applications must involve a **partnership** between at least one eligible institution and at least one eligible small business (see the definitions provided in [Part II, Chapter 10](#)). Only an eligible institution may serve as the applicant organization (applicant). Each partner shall contribute a minimum of 30% of the effort required to complete the proposed project. There must be at least one key personnel (including the Principal Investigator) at both the eligible institution and the eligible small business.

To calculate the percent effort of each partner:

- Determine the total number of hours to be worked by each person listed in the Budget Form (including consultants) by multiplying the *% Effort on Project* by the number of months s/he will work on the project at the rate of 160 hours a month.
- Calculate the total effort hours of all personnel working on the project from the institution (a).
- Calculate the total effort hours of all personnel working on the project from the small business (b).
- Calculate the total hours of all personnel working on the project, including personnel from both partners and any other consulting personnel (c).
- To calculate the percentage effort for the institution, divide the institution's total hours by the total project hours ($a / c = \text{institution \% effort}$). This percentage must be at least 30%.
- To calculate the percentage effort for the small business, divide the small business' total hours by the total project hours ($b / c = \text{small business \% effort}$). This percentage must be at least 30%.

The intent of this mechanism is to support collaboration between an academic researcher and a small business. For this reason, the same individual cannot be named as key personnel for both the eligible institution and the partnering eligible small business.

D. Special TTCP Application Requirements

Partner Letter of Support from the partnering eligible small business must be provided. The small business partner letter must include:

- a description of the relationship, role, and contribution that it will make to the proposed project;
- a statement of intent to collaborate with the eligible partner institution organization;
- its type of business entity as defined in s. 606.03(1), *F.S.*;
- the entity's Federal Entity Identification Number (FEIN) or, in place of that, a Dun and Bradstreet (DUNS) number;
- and an attestation that it meets the small business criteria for eligibility at the time of application.

If the applicant's proposal is funded, the small business and the institutional partner shall enter into an **intellectual property rights agreement** that is consistent with the provisions of federal STTR programs. A copy of the agreement must be provided to the Program at the end of the first quarter of the grant period.

4. Eligibility Requirements (TTF and TTCP)

A. Eligible Applicants

The applicant must be an eligible institution (see the definitions provided in [Part II, Chapter 10](#)).

According to s. 215.5602(5)(a) and s. 381.922(3)(a), *F.S.*, applications for biomedical research funding may be submitted from any university or established research institute in the state. For the purposes of this program, **eligible institutions** must include:

- State universities - A state university is defined in s. 1001.60, *F.S.*, except as otherwise specifically provided, as the 11 named public, postsecondary institutions and any branch campuses, centers, or other affiliates of the institution. For purposes of the Program, the named university or college and any branch campus, centers or affiliates, unless it can be legally shown otherwise, are considered one and the same, and where the number of applications is limited, the university and its branch campuses, centers or other affiliates must coordinate submission(s) in order to comply with the limitation. Public institutions must be accredited by a nationally recognized organization.

- Nonpublic institutions - For the purposes of the Program, nonpublic institutions operating under Chapter 1005, *F.S.* are also eligible. Any branch campuses, centers or other affiliates of a nonpublic institution are considered one in the same with that institution, and where the number of applications is limited, the institution and its branch campuses, centers or other affiliates must coordinate submission(s) in order to comply with the limitation. Nonpublic institutions must be accredited by a nationally recognized organization.
- Established research institutes - An established research institute is defined as any Florida nonprofit or foreign nonprofit covered under Chapter 617, *F.S.*, with a physical location in Florida, whose stated purpose and power is scientific, biomedical, or biotechnological research and/or development and is legally registered with the Florida Department of State, Division of Corporations. This includes federal government and non-profit medical and surgical hospitals including Veteran's Administration hospitals.

The applicant organization, in accordance with its own policies and procedures, should designate the Principal Investigator. The Principal Investigator must supervise the project directly and in person. Grant applications from Principal Investigators failing to meet all applicable eligibility requirements will be rejected. The Principal Investigator is the individual designated by the applicant organization to direct the grant project. The Principal Investigator is responsible and accountable to the applicant organization officials for the project's scientific and technical direction as well as the proper conduct of the project.

To be eligible as a **Principal Investigator at an eligible institution**, the individual must be a full-time faculty member, or a postdoctoral fellow in his/her final fellowship year, by the time the application is submitted. Postdoctoral applicants must be a Full-time Faculty member or equivalent by the grant start date. Temporary faculty members, even though full-time, are not eligible to apply. See Full-time Faculty and Full-time Equivalent definitions in [Part II, Chapter 10](#).

B. Guidelines for Florida Biomedical Research Advisory Council Member Participation

The Florida Biomedical Research Advisory Council (Council) has both statutory and self-imposed restrictions on the participation of its members in Bankhead-Coley Cancer Research Program grants and grant applications. These restrictions are intended to avoid real and perceived conflicts of interest without unfairly penalizing Council Members' institutions and personnel.

Council members **shall not**:

- Receive any form of financial compensation from a Bankhead-Coley award.
- Participate in any named role on a proposed Bankhead-Coley grant project other than as Mentor to a NIR applicant in cases where no other qualified mentor is available.
- Advise applicants regarding the preparation of a specific Bankhead-Coley grant application.

- Answer any programmatic questions (eligibility, content of the Calls, competition procedures, etc.) during the active competition (from Call release date until after award notification).

Council members **may**:

- Provide and sign letters of assurance/support or cover pages submitted as part of the application in cases where doing so is part of their official duties at the applicant organization.
- Serve as ambassadors for the Program, informing and educating researchers on the general goals of the Program and opportunities for funding offered through the Program.

Violations of these restrictions could result in the disqualification of an applicant for this competition. For a list of Advisory Council members, refer to <http://www.floridabiomed.com/council.html>.

C. Duplicate Applications and Overlap Limits

The Principal Investigator **shall not**:

- Submit duplicate projects or projects with significant scientific or financial overlap to different mechanisms within the Bankhead-Coley Cancer Research Program.
- Submit the same project/research to the Bankhead-Coley Program that is also being submitted by another investigator regardless of the grant mechanism.
- Submit duplicate projects or projects with significant scientific or financial overlap to both the Bankhead-Coley Cancer Research Program and the James and Esther King Biomedical Research Program during the same competition year.

The Principal Investigator **may**:

- Submit two or more completely different projects at the same time to the two Programs (King and Bankhead-Coley).
- Submit a TTCP application for a previously funded TTF award to continue the TTF project as long as all other eligibility criteria for the TTCP mechanism are met. The TTCP application must show different aims that move the overall project forward further along the development continuum and closer to obtaining follow-on funding.
- Apply for a TTF Grant or a new TTCP Grant for significantly different projects if a previous recipient of Small Business Technology Transfer (SBTT) or TTCP Grant (King or Bankhead-Coley). The Program shall make the final determination as to whether the proposal is unique.

Applicants must ensure that their proposed project does not duplicate or significantly **overlap**, scientifically or financially, with other projects in which they or any key personnel are involved. Overlap, whether scientific or financial, or commitment of a project member's effort greater than 100% is prohibited.

D. Application Resubmission

Previously unfunded King or Bankhead-Coley TTF and TTCP applications can be resubmitted only **one time**.

Previous recipients of a TTF Grant are eligible to apply for TTCP funding to continue the TTF project as long as all other eligibility criteria for this mechanism are met. The TTCP application must show different aims that move the overall project forward further along the development continuum and closer to obtaining follow-on funding.

5. Required TTF Grant Application Components

A complete TTF Grant application package **must** contain all required items listed in [Table 2](#).

MAXIMUM UPLOADED SINGLE FILE SIZE: 3 MB

Proposals exceeding the page limits where specified are subject to truncation to the page limit or may be disqualified without review. All required application forms are available for download within the online application in GrantEase™. **File sizes greater than 3 MB will not upload.** For information on how to reduce file sizes, see [Appendix A](#), or contact technical support via email at techsupport@floridabiomed.com.

Table 2. TTF Grant Application Components and Page Limits			
Section	Category	Page Limit	Comment
General Research Information:			
See Part III, Chapter 2 for detailed instructions for these sections of the application.			
A*	General Project Information	2	Required. Identifies general project information, the applicant organization, and the Principal Investigator.
B*	General Audience Abstract	1500 characters	Required. Explains the proposed project in layman's terms, including its relationship to the goals of the Program.
C*	Scientific Abstract	2000 characters	Required. This is the scientific description of the project.
D*	Cancer-Relatedness	3000 characters	Required. Provides a clear explanation of how the project is related to cancer.
E*	Key Personnel	1	Required. Identifies all key personnel.
F*	Disparate Groups	1200 characters	Required. This is a yes/no question asking if the proposed research reduces the impact of cancer on disparate group(s) and if so, how.

Table 2. TTF Grant Application Components and Page Limits			
Section	Category	Page Limit	Comment
Main Application Body:			
See Appendix B for an example of the Main Application Body and Part III, Chapter 9 for detailed instructions for this section of the application.			
G**	Table of Contents	1	Required.
H**	Resources	2	Required.
I**	Introduction to Resubmitted Application	3	Required (if applicable).
J**	Research/Project Plan	12	Required.
K**	Literature Cited	3	Required.
L**	Human Subjects	No limit	Required (if applicable).
M**	Vertebrate Animals	No limit	Required (if applicable).
N**	Consultants	4	Required (if applicable).
O**	Survey Instruments	No limit	Optional.
Budget:			
See Part III, Chapter 10 for detailed instructions for this section of the application and Appendix D for an example of the Budget Form.			
P	Budget	6	Required. The budget must explain the planned spending.
Other Documents:			
See Part III, Chapters 11 - 19 for detailed instructions for these sections of the application and Appendix E , F , and G for examples of the forms.			
Q	Biographical Sketches	4 per person	Required for the Principal Investigator and any other key personnel.
R	Research/Project Milestone Chart	2	Required. See Appendix E for an example form. Provides a high-level overview of the project schedule.

Table 2. TTF Grant Application Components and Page Limits			
Section	Category	Page Limit	Comment
S	Other Support	No Limit	Required. See Appendix F for an example form. All other active and pending awards for the Principal Investigator.
T	Technology Transfer Advisor Statement of Support Form	6	Required. See Appendix G for an example form. A completed form from the applicant organization's technology transfer advisor/officer.
U	Miscellaneous Letters of Support	4	Optional. Additional letters of support from technology transfer officials and/or other potential commercialization partners.
V	Cover/Certification Page – Signed	1	Required. A signed PDF copy must be uploaded.
W	IRB and/or IACUC Approvals	No limit	You may submit an application without necessary IRB or IACUC approvals. Project work may not begin until all approvals are provided.
<p>* (Sections A-F) Submitted materials are subject to the provisions of Art. I, Sec. 24, <i>Florida Constitution</i> and Chapter 119, <i>F.S.</i>, Florida's public records laws. These laws grant anyone the right to inspect any public record. <u>Applicants are discouraged from submitting information considered proprietary unless it is deemed by the applicant to be essential for proper evaluation of the application.</u></p> <p>** (Sections G-O) If the application contains information that the applicant believes constitutes trade secrets or proprietary information or is protected by a specific statutory exemption; it should be limited to the Main Application Body. The applicant must CLEARLY identify the information with [brackets] and a footnote that specifies the law that makes the document or information exempt from the public records laws. If a public records request is made involving documents with declarations of confidentiality, the Department will notify the applicant so that he/she may defend the claim in circuit court. The Department of Health will not provide legal representation to assert a confidentiality claim when a public record request is made.</p>			

6. Required TTCP Grant Application Components

A complete TTCP Grant application package **must** contain all required items listed in [Table 3](#).

MAXIMUM UPLOADED SINGLE FILE SIZE: 3 MB

Proposals exceeding the page limits where specified are subject to truncation to the page limit or may be disqualified without review. All required application forms are available for download within the online application in GrantEase™. **File sizes greater than 3 MB will not upload.** For information on how to reduce file sizes, see [Appendix A](#), or contact technical support via email at techsupport@floridabiomed.com.

Table 3. TTCP Grant Application Components and Page Limits			
Section	Category	Page Limit	Comment
General Research Information:			
See Part III, Chapter 2 for detailed instructions for these sections of the application.			
A*	General Project Information	2	Required. Identifies general project information, the applicant organization, and the Principal Investigator.
B*	General Audience Abstract	1500 characters	Required. Explains the proposed project in layman's terms, including its relationship to the goals of the Program.
C*	Scientific Abstract	2000 characters	Required. This is the scientific description of the project.
D*	Cancer-Relatedness	3000 characters	Required. Provides a clear explanation of how the project is related to cancer.
E*	Key Personnel	1	Required. Identifies all key personnel.
F*	Small Business Information	1	Required. Provides information regarding the small business and work effort to be performed by the eligible institution and the small business.
G*	Disparate Groups	1200 characters	Required. This is a yes/no question asking if the proposed research reduces the impact of cancer on disparate group(s) and if so, how.

Table 3. TTCP Grant Application Components and Page Limits			
Section	Category	Page Limit	Comment
Main Application Body:			
See Appendix C for an example of the Main Application Body and Part III, Chapter 9 for detailed instructions for this section of the application.			
H**	Table of Contents	1	Required.
I**	Alternative Funding Challenges	2	Required. Provides a clear explanation of why funding from other sources is not available for the project.
J**	Resources	2	Required.
K**	Introduction to Resubmitted Application	3	Required (if applicable).
L**	Research/Project Plan	12	Required.
M**	Partnership Information	4	Required. Provides information regarding the related experience and capabilities of each of the partner organizations to support their respective roles in the project.
N**	Literature Cited	3	Required.
O**	Human Subjects	No limit	Required (if applicable).
P**	Vertebrate Animals	No limit	Required (if applicable).
Q**	Consultants	4	Required (if applicable).
R**	Survey Instruments	No limit	Optional.
Budget:			
See Part III, Chapter 10 for detailed instructions for this section of the application and Appendix D for an example of the Budget Form.			
S	Budget	6	Required. The budget must explain the planned spending.

Table 3. TTCP Grant Application Components and Page Limits			
Section	Category	Page Limit	Comment
Other Documents:			
See Part III, Chapters 11 - 19 for detailed instructions for these sections of the application and Appendix E and F for examples of the forms.			
T	Biographical Sketches	4 per person	Required for the Principal Investigator and any other key personnel. TTCP applications must include the project leader at the partnering entity as key personnel.
U	Research/Project Milestone Chart	2	Required. See Appendix E for an example form. Provides a high-level overview of the project schedule.
V	Other Support	No Limit	Required. See Appendix F for an example form. All other active and pending awards for the Principal Investigator. TTCP applications must include the project leader at the partnering entity.
W	Partner Letter of Support	4	Required. A scanned copy of the original signed Partner Letter of Support from the partnering eligible small business.
X	Proof of Florida Business	No limit	Required. A Certificate of Status or Authorization from Division of Corporations, Florida Secretary of State; or any other certifications from the Secretary of State resulting from the requirements of Title XXXVI, Business Organizations, <i>F.S.</i> ; or in place of either of those above, a county business license.
Y	Miscellaneous Letters of Support	4	Optional. Additional letters of support from technology transfer officials and/or other potential commercialization partners.

Table 3. TTCP Grant Application Components and Page Limits			
Section	Category	Page Limit	Comment
Z	Cover/Certification Page – Signed	1	Required. A signed PDF copy must be uploaded.
AA	IRB and/or IACUC Approvals	No limit	You may submit an application without necessary IRB or IACUC approvals. Project work may not begin until all approvals are provided.
<p>* (Sections A-G) Submitted materials are subject to the provisions of Art. I, Sec. 24, <i>Florida Constitution</i> and Chapter 119, <i>F.S.</i>, Florida’s public records laws. These laws grant anyone the right to inspect any public record. <u>Applicants are discouraged from submitting information considered proprietary unless it is deemed by the applicant to be essential for proper evaluation of the application.</u></p> <p>** (Sections H-R) If the application contains information that the applicant believes constitutes trade secrets or proprietary information or is protected by a specific statutory exemption; it should be limited to the Main Application Body. The applicant must CLEARLY identify the information with [brackets] and a footnote that specifies the law that makes the document or information exempt from the public records laws. If a public records request is made involving documents with declarations of confidentiality, the Department will notify the applicant so that he/she may defend the claim in circuit court. The Department of Health will not provide legal representation to assert a confidentiality claim when a public record request is made.</p>			

7. Allowed and Disallowed Costs (TTF and TTCP)

The following information explains direct and indirect costs allowed by the Program, as well as disallowed costs. The Budget Form, shown in [Appendix D](#), will be used to establish the official budget for the grant, if awarded. Instructions are located in [Part III, Chapter 10](#) and the Budget Form is provided within the online application for download as a Microsoft Word™ document.

A. Allowed Direct Costs

Allowed direct cost expenses must be directly related to the project and may include:

- Salaries
- Fringe benefits
- Supplies
- Equipment
- Lab Services
- Domestic travel
- Consultant costs
- Patient-care costs
- Animal-care costs
- Local or other IRB or IACUC fees (if required)
- Department of Health IRB fees (if required)
- Consortium or contractual costs

Administrative costs *may* be included in direct cost categories, but only under two conditions:

- the services, functions, or activities are directly necessary for this grant,
AND
- these administrative costs have not been included in the calculation of the indirect costs.

The Program does not prohibit administrative costs as part of direct costs, but to be allowable, they must meet both of the above conditions. All direct costs must be specifically and directly related to the project, necessary for the project's completion, and adequately justified. Pay particular attention to these criteria with costs such as copying charges, telephone and Internet charges, maintenance contracts, etc.

Maximum Annual Base Salary Calculations:

The Program will pay a proportional percentage of the base salary (based on effort) of any personnel named on the application for this grant. The **maximum annual base salary** used in calculating these payments must not exceed the Executive Level 1 annual salary rate of the Federal Executive Pay Scale that is in effect as of the application submission date. See [Part II, Chapter 10](#), Definitions, for more information about the Federal Executive Pay Scale. This salary cap excludes fringe benefits, facilities, and administrative (F&A) expenses, and also excludes any income that an individual may be permitted to earn outside of the duties to the applicant organization. This provision is consistent with the NIH salary limitations on grants, cooperative agreements, and contracts.

Work Must Occur in Florida:

It is the intent of the Program that activities funded through the Program, including data analysis, occur in Florida. Ninety percent of work (effort) must occur and 90% of funds must be spent in Florida at the applicant organization and any collaborating entities. Funding for any out-of-state personnel or consulting expenses cannot exceed 10% of the total requested direct costs. This out-of-state limitation does not include lab services, supplies, or equipment.

B. Allowed Indirect Costs

Indirect costs (also referred to as IDC, F&A, or administrative costs) are limited to 15% of the direct costs requested. Indirect costs are those costs that are incurred for the joint or common benefit of several separate organizational or financial components (cost centers) of an organization, which specifically or readily cannot be identified to a particular cost center, project, or program.

C. Disallowed Costs

All direct costs must be specifically and directly related to the project, necessary for the project's completion, adequately justified, and made during the active grant period. Any other costs are disallowed. Additionally, the following items shall NOT be paid for with grant funds:

- Florida Department of Health personnel
- Construction, renovation, or remodeling
- International travel (including Canada)
- Vehicles
- Entertainment
- Employment subsidies
- Dues/Membership fees
- Meals/Food (other than as part of travel costs)
- Malpractice insurance premiums

8. Inquiries and Contacts (TTF and TTCP)

A. Programmatic Questions About This Call

This Open Call for Grant Applications is issued by the Program on behalf of the State of Florida, Department of Health. To ensure that no applicant receives an advantage over any other applicant, employees of the Department of Health and members of the Biomedical Research Advisory Council will not respond to questions regarding this Open Call for Grant Applications until after all awards are announced. The Lytmus Group, Inc., the Department's contracted agent for managing the Open Call for Grant Applications, accepting applications, and conducting peer review, is responsible for answering all applicant questions. Applicants and persons acting on their behalf may contact the Lytmus Group in writing via E-mail as indicated below regarding programmatic issues. Applicants who attempt to contact the Department of Health and/or Biomedical Research Advisory Council members regarding this Open Call for Grant Applications may have their applications disqualified.

To ensure equal access by all applicants to questions and answers, all programmatic questions must be submitted in writing via E-mail to bcquestions@floridabiomed.com.

Answers to questions will be available on the Program website, http://floridabiomed.com/bc_ga.html. Answers will be posted to the website frequently, as questions are received. Applicants are responsible for checking this website regularly throughout the application, peer review, and award processes for Program announcements.

B. Technical Questions About the Online Application

Direct all questions about the online application process and related issues (e.g. username and password problems) to:

Technical Support
Lytmos Group
(816) 347-9449 (phone)
techsupport@floridabiomed.com (E-mail)

If you experience technical difficulties during the final hours of the competition, please contact technical support immediately for assistance. The Department recommends that applications be submitted early and that you do not wait until the last day.

9. Requirements for Protecting Intellectual Property (TTF and TTCP)

Submitted materials are subject to the provisions of Art. I, Sec. 24, Florida Constitution and Chapter 119, F.S., Florida's public records law. These laws grant the right to any person to inspect any public record. There are some documents and information that are exempt from the public records laws. **All application materials are public record unless the applicant can show how they are exempt.**

Applicants are strongly discouraged from submitting information considered proprietary unless it is deemed by the applicant to be essential for proper evaluation of the application. If the application contains information that the applicant believes constitutes trade secrets, intellectual property, proprietary information, or information protected by a specific statutory exemption, it should be limited to the Main Application Body. **The applicant must CLEARLY identify the confidential information with [brackets].**

If a public records request is made involving documents with declarations of confidentiality, the Department will notify the applicant so that he/she may substantiate and defend the claim. The Department will not provide legal representation to assert a confidentiality claim.

10. Definitions (TTF and TTCP)

Business entity: Per s. 606.03(1), *F.S.*, this means any form of corporation, partnership, association, cooperative, joint venture, business trust, or sole proprietorship that conducts business in Florida.

Collaborator: An individual involved with the Principal Investigator in the scientific development or execution of the project. These individuals typically devote a specific percent of effort to the project and are identified as key personnel. The collaborator may be employed by, or affiliated with, either the Grantee institution or an institution participating in the project under a consortium or contractual agreement.

Commercialization: The process of developing markets and producing and delivering products or services for sale (whether by the originating party or by others). As used by the Program, commercialization includes both government and non-government markets.

Consortium or Contractual Agreement: An agreement whereby a project is carried out by the Grantee and one or more other organizations that are separate legal entities. In this arrangement, the Grantee contracts for the performance of a substantial and/or a significant portion of the activities to be conducted under the grant. These agreements typically involve a specific percent of effort from the consortium's Principal Investigator and a breakdown of costs by category, such as personnel, supplies, and other allowable expenses, including indirect costs.

Consultant: An individual hired to give professional advice or services for a fee, normally not as an employee of the hiring entity. Consultants may also include firms that provide paid professional advice or services.

Cooperative Agreement: A support mechanism that will have substantial scientific and/or programmatic involvement. Substantial programmatic involvement means that after award, scientific or project staff will assist, guide, coordinate, or participate in programmatic activities beyond the normal stewardship responsibility in the administration of grants. Proposed cooperative agreements will be published as policy announcements, program announcements, or requests for applications.

Development: The systematic application of knowledge toward the production of useful materials, devices, and systems or methods, including design, development, and improvement of prototypes and new processes to meet specific requirements.

DOH IRB: DOH IRB refers to the Institutional Review Board operated by the Florida Department of Health. It is independent from any IRB that may have jurisdiction over research performed at the Grantee institution. Per the “Department of Health, Institutional Review Board, Activities Subject to IRB Jurisdiction” policy DOHP 400-1.2, studies funded by the James and Esther King Biomedical Research Program and the Bankhead-Coley Cancer Research Program do NOT require review by the DOH IRB unless the research involves Department of Health clients, personnel, facilities, or data. Note: an application for DOH IRB approval (if applicable) is not required to be submitted until after a project has been awarded. Visit www.flpublichealthethics.net for DOH IRB instructions and forms. Note that the DOH IRB has agreements with several eligible institutions in order to simplify the IRB process when dual IRB approvals are required. Check with the DOH IRB for more information.

Eligible Institution: Any public university, non-public institution, or established research institute (see specific definitions of each).

Eligible Small Business: Any entity with a principal site in Florida meeting all of the following criteria at the time of application:

- Is a "Business entity" as defined in s. 606.03(1), *F.S.* to include any form of corporation, partnership, association, cooperative, joint venture, business trust, or sole proprietorship that conducts business in Florida;
- Is organized for profit; is at least 51 percent owned, or in the case of a publicly owned business, at least 51 percent of its voting stock is owned, by U.S. citizens or lawfully admitted permanent resident aliens; and
- Is a “small business” as defined by s. 288.703, *F.S.* with less than 200 employees and a net worth of not more than \$5 million.

Established Research Institute: An established research institute eligible for Program funding is an organization that is any Florida nonprofit or foreign nonprofit covered under Chapter 617, *F.S.*, with a physical location in Florida, whose stated purpose and powers are scientific, biomedical or biotechnological research and/or development and is legally registered with the Florida Department of State, Division of Corporations. This includes federal government and non-profit medical and surgical hospitals including Veteran’s Administration hospitals.

Feasibility: The practical extent to which a project is capable of being successfully performed within the requested time and for the awarded money. With regard to commercialization, feasibility refers to the potential that a project demonstrates for further development activities.

Federal Executive Pay Scale, Executive Level 1: The U.S. Office of Personnel Management establishes executive pay schedules each year normally around the first month of the calendar year. To view the current Executive Level 1 pay scale, visit the website of the U.S. Office of Personnel Management at <http://www.opm.gov/oca/> and search for executive schedule.

Full-time Equivalent (FTE): The definition of a Full-time Equivalent must be in accordance with the institution’s policy, used consistently by the institution regardless of the source of support, and may be different in terms of actual months per year or days per week at the applicant institution.

Full-time Faculty: Full-time Faculty positions are defined as teaching, clinical, and research appointments carrying classroom teaching, laboratory teaching, clinical teaching or service, or research assignments equal to at least nine months per fiscal year or 0.75 FTE. This includes tenured, tenure-track, and non-tenure track appointments.

Institutional Base Salary: The annual compensation that the applicant institution pays for an employee's appointment, whether that individual's time is spent on research, teaching, patient care, or other activities. Base salary excludes any income that an individual may be permitted to earn outside of duties to the applicant institution. Base salary may not be increased as a result of replacing institutional salary funds with grant funds.

Key Personnel: Key personnel are defined as, and should be limited to, individuals who contribute to the scientific development or execution of the project in a substantive way, whether or not salaries are requested.

Nonpublic Institutions: Nonpublic institutions operating under Chapter 1005, *F.S.* are eligible. For the purposes of the Program, any branch campuses, centers, or other affiliates of a nonpublic institution are considered one and the same with that institution. Where the number of applications is limited, the institution and its branch campuses, centers, or other affiliates must coordinate submission(s) in order to comply with the limitation.

Overlap, Commitment: Commitment overlap occurs when any project staff has time commitments exceeding 100%. This is the case whether or not the grant includes salary support for the effort. While information on other support is only requested for the Principal Investigator, no individual on the project may have combined commitments in excess of 100%.

Overlap, Financial: Financial overlap occurs when duplicate or equivalent budget items (e.g., equipment, salary) are requested in an application but are already funded or provided for by another source.

Overlap, Scientific: Scientific overlap occurs when: (1) substantially the same research is funded by two or more different funding sources, or (2) a specific research objective and the research design for accomplishing that objective are the same or closely related in two or more awards, regardless of the funding source.

Principal Investigator: The one individual designated by the applicant organization to direct the project to be supported by the grant. The Principal Investigator is responsible and accountable to applicant organization officials for the proper conduct of the project. The Principal Investigator must supervise the project directly and in person.

Public University: A public (state) university is defined in s. 1001.60, *F.S.*, except as otherwise specifically provided; as the 11 named public, postsecondary institutions and any branch campuses, centers, or other affiliates of the institution. For purposes of the Program, any branch campuses, centers, or other affiliates of a public university are considered one and the same with that university. Where the number of applications is limited, the university and any branch campuses, centers, or other affiliates must coordinate submission(s) in order to comply with the limitation.

Small Business: Per s. 288.703(1), *F.S.*, a "small business" means an independently owned and operated business entity that employs 200 or fewer permanent full-time employees and that, together with its affiliates, has a net worth of less than \$5 million; or any firm based in Florida that has a Small Business Administration 8(a) certification¹ as applicable to sole proprietorships. The \$5 million net worth requirement shall include both personal and business investments.

Technology Transfer Advisors: Staff members of the technology transfer office at the applicant institution, or if no such office exists, an individual whose official job responsibilities include traditional technology transfer responsibilities.

¹ § 124.101 What are the basic requirements a concern must meet for the 8(a) BD program?

Generally, a concern meets the basic requirements for admission to the 8(a) BD program if it is a small business which is unconditionally owned and controlled by one or more socially and economically disadvantaged individuals who are of good character and citizens of the United States, and which demonstrates potential for success.

PART III. INSTRUCTIONS FOR APPLICATION PREPARATION AND SUBMISSION

1. General Instructions for Application Submission

All applications must be prepared and submitted online through the online application system, GrantEase™, accessible from the Program's website, www.floridabiomed.com. Paper applications will not be accepted. **Application materials not submitted in the specified manner and in the specified format will be disqualified from competition.**

Required signature pages such as budgets, and letters of support, must be scanned and included in the appropriate section of the application as indicated in the online instructions. Online applications without these pages will be disqualified.

Other documentation and materials such as biographical sketches and other support must be converted to electronic format and placed in the appropriate section of the online application.

Peer reviewers only have access to the online application and do not receive applications in paper format.

A. Technical Assistance

For technical assistance completing an application (i.e. how to upload a file, username and password problems, etc.), login at the Program website at www.floridabiomed.com and use the Live Help feature or contact the Lytmos Group via E-mail at bcprogramsupport@floridabiomed.com or by phone at (816) 347-9449.

If you have questions regarding interpretation of the Open Call language or other programmatic questions about the Open Call, see [Part II, Chapter 8 A](#), for the appropriate process to submit those questions.

B. Online Registration and Application Submission

Only applications received through the GrantEase™ online application system will be accepted.

To complete the online application process:

1. **Applicants must register to access the online application and forms.** Register for an online application at <http://www.floridabiomed.com/login.html> and complete the brief project profile. Information entered into the Registration fields will carry forward to the application and can be modified within the application if needed. Registration will be acknowledged with an E-mail message containing login instructions and a username and password. Everyone, including previous applicants, must register to obtain access to the online application process.
2. Log in at <http://www.floridabiomed.com/login.html>. If you are a new applicant you will be prompted to change the assigned temporary password.

3. Complete the online application form for the appropriate grant mechanism. Field level instructions are in [Part III, Chapters 2 - 19](#) of this document. **Certain sections of the application include downloadable Microsoft Word™ or Excel™ forms to simplify preparation and submission. All forms can be found in the online application by clicking on the Application Form Templates menu link. Do not alter the forms.** Deviations may be grounds for the Program to reject the entire application. Special formatting, scientific notation, pictures, and objects may be included in these documents. However, within the online application form fields such as the Project Title, General Audience Abstract and the Scientific Abstract, use only conventional alphanumeric letters and numbers (i.e., ASCII text) with no drawings, special characters, or symbols.
4. **A login username is intended to be used by one person at a time. Unpredictable results can occur if multiple people are using the same login ID (username) and are updating the application at the same time.**
5. Some forms, such as the Cover/Certification Page and Budget Form require signatures. Do not wait until minutes before the deadline to obtain the required signatures. Applications may be disqualified if appropriate signatures are not on required forms or letters.
6. When the Word and Excel forms are completed, convert each file to Adobe Acrobat™ (PDF) format. The conversion to PDF will require access to the full Adobe Acrobat™ software product. This is a separately licensed software product from Adobe, not to be confused with the free Adobe Acrobat Reader™ that is used only to view PDF-formatted documents. Specifications and ordering information for either the full Adobe Acrobat™ software package or an online conversion subscription service can be found at Adobe's website, www.adobe.com/products/acrobat/main.html. It is the sole responsibility of the applicant to make sure that this conversion to PDF format is completed successfully. The maximum uploaded file size is shown in [Part II, Chapters 5](#) (TTF) and [6](#) (TTCP). See [Appendix A](#) for tips on how to reduce PDF file sizes.
7. Return to the website to work on the application at any time prior to submission. All required fields and sections must be completed before an application may be submitted. **Once submitted, applications cannot be modified. If an application is accidentally submitted, contact technical support (see [Part III, Chapter 1 A](#)) for assistance.**
8. An application cannot be changed after the submission due date. Errata sheets or replacement files will not be accepted after the application deadline. If an application has been submitted and the applicant wishes to change the submitted application before the deadline, contact technical assistance (identified in [Part III, Chapter 1 A](#)), and the application can be unsubmitted so that the applicant can change and resubmit the application. The change and resubmission must occur before the application deadline as shown in [Part I, Chapter 4](#).

C. General Application Guidelines

1. An application should be written with the care and thoroughness given to manuscripts for publication. Review the application carefully to ensure that information necessary for evaluation is included. The scientific and technical merit of the proposed project is the primary concern for peer review.

2. Read and follow all instructions carefully to avoid delays and misunderstandings. Address each section of the application clearly and precisely.
3. Applications must be legible and in English.
4. The entire text of all documents uploaded into the online application must be single spaced in an easily readable font. Use standard 11-point type for the text, and no less than 10-point type for table figures and legends. Place the Principal Investigator's name (last, first) in the designated space on each page. Margins on all applicant created documents should be at least one inch (excluding required headers and footers). Do not use photo reduction for scanned items. Use black type for all text. The application must contain only materials that, when scanned or converted to PDF format, are clear, sharp, and easy to read.
5. **Observe the character and page number limitations.** A summary of these limitations is given in [Tables 2](#) (TTF) and [3](#) (TTCP). Character limits include spaces. Applicants are encouraged to confirm compliance with this requirement by printing the full application before submission. Applications that exceed the page limits are subject to truncation to the page limit or may be disqualified without review.
6. Before it can be submitted, the application must contain all of the required sections identified in [Tables 2](#) (TTF) and [3](#) (TTCP). Use the tables to ensure that a complete application is submitted. Uploaded files should be titled by the categories listed in the tables and page numbered within the form. **Appended material may not be used to circumvent the page limits for individual sections of the application.**

2. General Project Information

A. Project Information

1. **Title of Project:** Enter the project title. Note: This exact project name must also appear on all submissions of regulatory approvals such as local IRB approval.
2. **Amount of Grant Funds Requested.**
 - a. **Total Amount of Grant Funds Requested (all eligible years):** Enter the amount of funds (direct and indirect) requested for the life of the grant. This number should be the same as "Amount of Grant Funds Requested in Year 1."
 - b. **Amount of Grant Funds Requested in Year 1:** Enter the amount of funds (direct and indirect) requested for the initial 12-month period of the grant.
3. **Type of Project:** Select the grant mechanism for which you are applying (TTF or TTCP).
4. **Previous Bankhead-Coley Applicant:** If you have previously been an applicant to the Bankhead-Coley Cancer Research Program, check "Yes," otherwise check "No." If you answered "Yes," indicate the date of the most recent submission.

5. **Research Site:** Indicate the site(s) where the work described in the Research Plan will be conducted, including institution name, city, and state. If there is more than one site, list all the sites and provide an explanation in the Resources section of the application. The first site listed should be the site where most of the work will be conducted.
6. **Human Subjects:** If activities involving human subjects **are not planned at any time** during the proposed project period, check “No.” If activities involving human subjects, whether or not exempt from Federal regulations for the protection of human subjects, **are planned at any time** during the proposed project period, either at the applicant organization, or at any other site or collaborating organization, check “Yes.” If the answer to this question is “Yes,” an additional section in the Online Application will appear called “Human Subjects Used.”
7. **Vertebrate Animals:** If activities involving vertebrate animals **are not planned at any time** during the proposed project period, check “No.” If activities involving vertebrate animals **are planned at any time** during the proposed project period, either at the applicant organization or at any other site or collaborating organization, check “Yes.” If the answer to this question is “Yes,” an additional section in the Online Application will appear called “Vertebrate Animals Used.”
8. **Recombinant DNA Molecules:** If research/project activities involving recombinant DNA molecules **are planned at any time** during the proposed project period, check “Yes,” otherwise check “No.” All research involving recombinant DNA techniques must meet the requirements of the *NIH Guidelines for Research Involving Recombinant DNA Molecules*, including submission of the project for approval, if necessary.
9. **Excluded Peer Reviewers:** List individuals that you wish to exclude from peer reviewing your application. The Program already excludes peer reviewers from the state of Florida so please don't include Florida scientists in your list. List the name and institution or city/state for each individual. Separate each individual with a semicolon. *Entry is limited to 200 characters.*
10. **Stem Cell Research:** If activities involving stem cells **are not planned at any time** during the proposed project period, check “No.” If activities involving stem cells, whether or not exempt from Federal regulations for the protection of human subjects, **are planned at any time** during the proposed project period, either at the applicant organization or at any other site or collaborating organization, check the type of stem cell – “Adult,” “Embryonic,” or “Animal.” If the project involves stem cells, please identify the source(s) of stem cells being used and include a very brief description of the relevant research activity. *Entry is limited to 1200 characters.*

B. Principal Investigator Information

1. **Name of Principal Investigator:** Name the **one** person responsible at the applicant organization for the scientific and technical direction of this project.
2. **Suffix:** Indicate the Principal Investigator's degree(s) or credential(s) (e.g., Ph.D., M.D., R.N.). The Principal Investigator will be addressed using this suffix (example: Jane Doe, Ph.D, R.N.).

- 3. Position Title:** Provide the academic or professional title of the Principal Investigator. If more than one title, indicate the one most relevant to the proposed project, such as Professor of Biochemistry, Chief of Surgical Service, et cetera.
- 4. Department or Office, Service, Laboratory, or Equivalent:** Indicate the organizational affiliation of the Principal Investigator, such as Department of Medicine, Materials Research Laboratory, or Social Sciences Institute.
- 5. Institution/Organization:** Select the eligible applicant institution that will be legally and financially responsible for this grant. If the institution is not included in the drop down list, select "other" and enter the institution name.
- 6. Organization Federal ID Number:** Enter the nine-digit federal identification number assigned to the applicant organization by the Internal Revenue Service.
- 7. Applicant Organization Type:** Select the one description from the drop down list that best describes the applicant organization.
- 8. Financial Conflict of Interest:** Does your institution have a Financial Conflict of Interest policy and procedure that is consistent with NIH requirements? Check either "Yes" or "No."
- 9. Mailing Address:** Provide complete and exact information, as it should appear on the mailing label, for postal delivery to the Principal Investigator. Most written communications to the Principal Investigator will use this address. Note: Providing precise mailing information is critical to resolving any problems with your application that might otherwise result in disqualification, and for making timely award notification.
- 10. Courier Address:** Provide complete and exact information, including room number, building identifier and street address, necessary for courier delivery (Ex: Fed Ex). This address will be used for certain written communication. Do not indicate a post office box.
- 11. Telephone Number:** Provide a daytime telephone number (including extension, if applicable) for the Principal Investigator.
- 12. Fax Number:** Provide a fax number (including area code) for the Principal Investigator.
- 13. E-mail Address:** Enter the appropriate electronic mail address for the Principal Investigator.
- 14. U.S. Citizenship:** If the Principal Investigator is a U.S. Citizen check "Yes," otherwise check "No." If you are a lawful permanent resident (as demonstrated with evidence of a green card, I-151 or I-155 paperwork) check "Yes" and provide the expiration date from your green card. This information is being collected from all applicants for purposes of statistical analysis and will not be used in award determinations. There are no citizenship requirements to be eligible.

- 15. PI or Co-PI on a National Grant:** Check either “Yes” or “No,” depending on whether the Principal Investigator has previously served as the Principal Investigator or Co-Principal Investigator on a non-mentored, peer-reviewed, national research grant with a budget of \$100,000 per year in direct costs. This information is being collected from all applicants for purposes of statistical analysis.

C. Institution PI Qualifications

- 1. Full Time Faculty or Equivalent or a Final Year Postdoc Fellow at Florida Institution:** If the Principal Investigator is a full-time faculty member (or full-time faculty equivalent) or a postdoctoral fellow in his/her final year by the application is submitted at an eligible institution check “Yes,” otherwise check “No.” (See full-time faculty and eligible institution definitions in [Part II, Chapter 10.](#))
- 2. First Full-time Faculty Appointment:** This information is being collected from all applicants for purposes of statistical analysis and will not be used in award determinations.
 - a. Date:** Specify the date of your first full-time appointment as a university faculty member or an equivalent position at any research institution (regardless of location).
 - b. Institution:** Identify the university or research institution where you first became a full-time faculty member or held an equivalent position (regardless of location). (See full-time faculty definition in [Part II, Chapter 10.](#))
 - c. Title:** Identify the title or position held in your first full-time faculty or equivalent position (regardless of location). (See full-time faculty definition in [Part II, Chapter 10.](#))

D. Administrative Official for Applicant Organization

The Administrative Official is the official authorized to sign on behalf of the applicant organization to certify all statements as true and authorize all commitments contained within, including matching funds if applicable. This official has signature authority for awards terms and conditions, grant amendments, budgets, etc. For universities, this is the Sponsored Research Official. Provide complete and exact information as it should appear on a mailing label for postal delivery. Following these fields, also enter complete and exact information necessary for courier delivery, including building identifier, room number, and street address. Do not include a Post Office box number in the courier address. Enter the telephone number (and extension, if applicable), fax number, and E-mail address.

E. Research Classification

In order to receive funding, an application must include a compelling case for its relationship to the prevention, treatment, diagnosis, and/or cure of cancer; however, many types of research may qualify. Please select the research categories that best fit the project work. Choose as many categories as apply.

F. Research Keywords

Please identify a few scientific keywords (separated by commas) that identify the proposed project. These keywords may be used to match the proposal to qualified peer reviewers. Avoid overly broad terms (e.g. cancer, biochemistry, immunology, etc.) in favor of more descriptive terms that will help to match the application with the best possible reviewers. Define the type/location of a disease (e.g. lung cancer, brain cancer, stroke) or the specific research area (e.g. neuroimmunology, allergy, infectious diseases), and provide terminology/techniques that may be unique to your field (e.g. endothelial cells, imaging medical device, radiotherapy, RNA interference, intracellular signal transduction). *Entry is limited to 200 characters.*

3. General Audience Abstract

State the project's broad, long-term objectives and specific aims, making specific reference to the project's relevance to prevention, diagnosis, treatment, and/or cure of cancer. Describe concisely the research design and methods for achieving these goals. Avoid summaries of previous accomplishments and the use of the first person. This description is meant to serve as a succinct and accurate description of the proposed work when separated from the application. **If the application is funded, this description will be used to compile reports and provide information to the Governor, Legislature, and the general public, so make this summary for a general audience as opposed to the scientific community.** Some scientific notations and formatting may not show in the online application sections. Use only conventional alphanumeric letters and numbers with no drawings or symbols. Do NOT include information in this section considered proprietary/confidential. *Entry is limited to 1500 characters.*

4. Scientific Abstract

Provide a scientific abstract for the project. This abstract will be used as the primary resource for assigning applications to individual peer reviewers. If the application is awarded, this description will be used to provide project information to the scientific community. Do NOT include information in this section considered proprietary/confidential unless you think it is essential for proper evaluation of the application. Some scientific notations and formatting may not show in the online application sections. Use only conventional alphanumeric letters and numbers with no drawings or symbols. *Entry is limited to 2000 characters.*

5. Cancer-Relatedness

Applicants must demonstrate the relatedness of the proposed research to cancer. Also see [Part II, Chapter 1](#). *Entry is limited to 3000 characters.*

6. Key Personnel

Key personnel are those persons whose expertise in the subject area(s) of the project are central to convincing the peer reviewers that the project is feasible. This list of key personnel must at least include the Principal Investigator (for TTF and TTCP applications) and the project leader from the small business partner entity (for TTCP applications), and may include just one or a few additional individuals, as appropriate. For each individual, provide the name, organization, and role on the project. Under role on the project, indicate how the individual will function with regard to the proposed project (for example, Principal Investigator, Investigator, consultant, etc.) "TBA" (to be announced/appointed) cannot be key personnel. Biographical sketches of any identified key personnel are required with the application. It is not necessary that all individuals or positions paid under the grant be listed as key personnel, nor is it necessary that key personnel be compensated with funds from the grant.

7. Small Business Information (TTCP Applications Only)

Refer to [Part II, Chapter 10](#) for the definition of an eligible small business before answering these questions. Answer the yes/no questions regarding the status and size of the small business entity. Indicate the percent effort to be performed by the eligible institution and the percent effort to be performed by the eligible small business. Refer to [Part II, Chapter 3 C](#) for assistance with calculating percent effort.

8. Disparate Groups

If the proposed research does not help reduce the impact of cancer on disparate groups, check "No;" otherwise check "Yes" and describe the disparate group(s) and how the research will help reduce the impact of cancer on that group(s). Disparate groups include the underserved, minority, elderly, and populations with low income and education levels. *Entry is limited to 1200 characters.*

9. Main Application Body

This part of the application includes Sections identified as part of the main application body as indicated in [Tables 2](#) and [3](#) for the TTF and TTCP mechanisms, respectively.

Click on the link called *Application Form Templates* to download the main application form. When you have completed the form, convert the document into a single PDF file and upload it into the online application by clicking on the *Core Application Documents* link and clicking the upload button for Main Application.

A. Table of Contents

Provide the page numbers for each application section listed in the *Table of Contents*. Number pages consecutively, at the bottom of each page, throughout the application. Do not include unnumbered pages and do not use suffixes, such as 3a, 3b. This form also serves as a checklist to ensure all application components are included. *Limit is one page.*

B. Alternative Funding Challenges (TTCP Applications Only)

It is not the intent of the Program to replicate or replace funding from other traditional sources such as the National Institutes of Health, but rather to provide funding to fill gaps left by those traditional sources. Provide a clear explanation of why funding from other sources is not available for the proposed project. Include specific challenges and obstacles. *Limit is one page.*

C. Resources

Specify the facilities, laboratories, clinics, animals, computers, offices, major equipment, or other resources to be used for the proposed project. Indicate the sites and describe capabilities, relative proximity, and extent of availability for the project. Also, identify support services such as machine shops, electronics shops, etc., and specify the extent to which they will be available to the project. *Limit is two pages.*

D. Introduction to Resubmitted Application

All resubmitted TTF or TTCP applications must begin with an Introduction that summarizes the substantial additions, deletions, or changes. The Introduction must also include responses to the criticisms and issues raised in the Program Evaluation Report (Peer Review Report). Identify all changes in the Research/Project Design and Methods section clearly by bracketing, indenting, or changing the font, unless the changes are so extensive as to include most of the text. This exception should be explained in the Introduction. Do not underline or shade changes.

If this is the first time you have submitted this TTF or TTCP proposal to the Program, indicate "not applicable" in this section. *Limit is three pages.*

E. Research/Project Plan

The Research/Project Plan should include information sufficient to evaluate the project properly, independent of any other document. Be specific and informative, and avoid redundancies.

Organize this section to answer these four questions: (1) What do you intend to do? (2) Why is the work important? (3) What has already been done? (4) How are you going to do the work?

Do not exceed the page limitations for the Research Plan as indicated in Table 2 (TTF) or Table 3 (TTCP). The Program recommends the format and page distribution as shown below. All tables, graphs, figures, diagrams, charts, and scanned photographs of material must be included within the page limit. *Limit is 12 pages. Shorter is acceptable.*

1. Specific Aims:

State the specific objectives of the project, including the technical questions you will try to answer to determine the feasibility of the proposed approach.

State concisely and realistically what the proposed research/project is intended to accomplish in terms of its potential for technological innovation and commercial application. Define the final proposed product, process, or service to be developed in the long-term. *One to two pages are recommended.*

2. Background and Significance:

Provide a clear statement of the specific technical problem or opportunity. Describe significant research or research and development efforts that are directly related to the proposal, including any conducted by the eligible small business. Describe how it relates to the proposed effort, and any planned coordination with outside sources.

Briefly sketch the background leading to the present proposal, critically evaluating existing knowledge and alternative approaches, and specifically identify the gaps that the project is intending to fill. *Two to three pages are recommended.*

3. Commercial Potential:

Describe the potential marketability and/or commercial viability of the research/project. Who will eventually be willing to pay for the resulting product, process, or service? What solutions are they using now, and why would they prefer your potential solution to all other alternatives? Explain the importance of the proposed project in advancing the concept toward commercialization, and briefly explain your anticipated next steps if this project is successful. Your Technology Transfer Office can be a valuable source of information and assistance while completing this portion of the Research/Project Plan. *One to two pages are recommended.*

4. Preliminary Studies:

Provide sufficient preliminary data supporting the scientific merit to assist reviewers in assessing the likelihood of success of the proposed project.

For resubmissions, the Preliminary Studies section should incorporate any work done since the prior submitted version. *One to two pages are recommended, if applicable.*

5. Research/Project Design and Methods:

Discuss in detail the experimental design, procedures and protocols, to be used to achieve each objective or task, and the means by which the data will be analyzed and interpreted. Describe any new methodology and its advantage over existing methodologies. Describe any novel concepts, approaches, tools, or technologies for the proposed studies. Discuss the potential difficulties and limitations of using the proposed procedures and alternative approaches to achieve the aims. Discuss the criteria that will be used to determine that feasibility has been demonstrated. Point out any procedures, situations, or materials that may be hazardous to personnel and the precautions to be exercised. Include how the data will be collected, analyzed, and interpreted as well as the data-sharing plan as appropriate.

Although no specific number of pages is recommended for the Research/Project Design and Methods section, be succinct as possible. There is no minimum page requirement for items 1 – 5.

F. Partnership Information (TTCP Applications Only)

1. Eligible Institution Qualifications:

Identify the related experiences and capabilities of the eligible institution to support its role in the proposed project. Identify any unique qualifications.

2. Eligible Small Business Qualifications:

Identify the related experiences and capabilities of the eligible small business to support its respective role in the proposed project. Identify any unique qualifications.

3. Partnership Agreement:

Describe any relevant formal agreement(s) that currently exists between the partners, such as a teaming agreement, memorandum of understanding, or licensing agreement. If none exists, how do you plan to formalize agreements between the partners related to this project, especially as it pertains to ownership of any resulting intellectual property? Include a scanned copy of any subcontract agreement(s) in this section of the form, if available.

Limit is four pages.

G. Literature Cited

List key references only. This section may include, but may not replace, the list of publications required in the Preliminary Studies (of the Research/Project Plan section, above). Each reference must include the title, names of all authors, book or journal, volume number, page numbers, and year of publication. The references should be limited to relevant and current literature. It is important to be concise and to select only those literature references pertinent to the proposed research. *Limit is three pages.*

H. Human Subjects

If the proposed project does NOT involve human subjects at any time during the project, write "N/A" in this section.

Even if a grant application is exempt from these regulations, you must address the issues of gender/race/ethnic composition of the subject population, as explained below. (Please note, if an award is made, the Principal Investigator may additionally be responsible for obtaining Department of Health IRB approval.)

If human subjects are involved in this project, address the following seven points. In addition, when research involving human subjects will take place at collaborating site(s) or other site(s), provide this information before discussing the seven points. ***Although no specific page limit applies to this section of the application, be concise.***

1. Provide a detailed description of the proposed involvement of human subjects in the work outlined in the Research/Project Plan section. Describe the characteristics of the subject population, including their anticipated number, age range, gender, race, ethnicity, and health status. Identify the criteria for inclusion or exclusion of any subpopulation. Explain the rationale for the involvement of special classes of subjects, such as pregnant women, children, prisoners, institutionalized individuals, or others who are likely to be vulnerable.
2. Identify the sources of research/project material obtained from individually identifiable **living** human subjects in the form of specimens, records, or data. Indicate whether the material or data will be obtained specifically for project purposes or whether use will be made of existing specimens, records, or data.
3. Describe plans for the recruitment of subjects and the consent procedures to be followed. Include how consent will be sought and obtained, who will seek it, the nature of the information to be provided to prospective subjects, and the method of documenting consent. State if the Institutional Review Board (IRB) has authorized a modification or waiver of the elements of consent or the requirement for documentation of consent. The informed consent form, which must have IRB approval, should be submitted to the Program only if requested.
4. Describe potential risks to the subjects (physical, psychological, social, legal, or other) and assess their likelihood and seriousness. Where appropriate, describe alternative treatments and procedures that might be advantageous to the subjects.
5. Describe the procedures for protecting against or minimizing potential risks, including risks to confidentiality, and assess their likely effectiveness. Where appropriate, discuss provisions for ensuring necessary medical or professional intervention in the event of adverse effects to the subjects. Also, where appropriate, describe the provisions for monitoring the data collected to ensure the safety and privacy of subjects.
6. Discuss why the risks to subjects are reasonable in relation to the anticipated benefits to subjects and in relation to the importance of the knowledge that may reasonably be expected to result. If a test article (investigational new drug, device, or biologic) is involved, name the test article and state whether the 30-day interval between submission of applicant certification to the Food and Drug Administration and its response has elapsed or has been waived and/or whether use of the test article has been withheld or restricted by the Food and Drug Administration.
7. **Gender and Minority Inclusion for Research Involving Human Subjects:** Women and members of minority groups and their subpopulations should be included in all Program-supported biomedical research projects involving human subjects, unless a clear and compelling rationale shows that inclusion is inappropriate with respect to the health of the subjects or the purpose of the research. Exclusion under other circumstances may be made based on a compelling rationale and justification. Cost is not an acceptable reason for exclusion, except when the study would duplicate data from other sources. Women of childbearing potential should not be routinely excluded from participation in clinical research. This applies to research subjects of all ages.

Address the inclusion of women and members of minority groups and their subpopulations in developing a research design appropriate to the scientific objectives of the study. Describe the composition of the proposed study population in terms of gender and racial/ethnic group, and provide a rationale for selection of such subjects. Provide the proposed enrollment beginning and end dates. Include a description of proposed outreach programs for recruiting women and minorities as participants. Provide compelling rationale and justification for requesting any exclusion noted above. When proposing Phase III clinical trials, show whether clinically important gender or race/ethnicity differences are to be expected, and how the trial is designed to accommodate any differences.

I. Vertebrate Animals

If the proposed project does NOT involve vertebrate animals at any time during the project, write "N/A" in this section.

If the proposed project involves vertebrate animals at any time during the project, address the five points shown below. In addition, when research involving vertebrate animals will take place at collaborating site(s) or other site(s), provide this information before discussing the five points.

Although no specific page limit applies to this section of the application, be concise.

1. Provide a detailed description of the proposed use of animals in the work outlined in the Research/Project Plan section. Identify the species, strains, ages, sex, and numbers of animals to be used in the proposed work.
2. Justify the use of animals, the choice of species, and the numbers to be used. If animals are in short supply, costly, or to be used in large numbers, provide an additional rationale for their selection and numbers.
3. Provide information on the maintenance and veterinary care of the animals involved.
4. Describe the procedures for ensuring that discomfort, distress, pain, and injury will be limited to that which is unavoidable in the conduct of scientifically sound research. Describe the use of analgesic, anesthetic, and tranquilizing drugs and/or comfortable restraining devices, where appropriate, to minimize discomfort, distress, pain, and injury.
5. Describe any method of euthanasia to be used and the reasons for its selection. State whether this method is consistent with the recommendations of the Panel on Euthanasia of the American Veterinary Medical Association. If not, present a justification for not following the recommendations.

J. Consultants

Include scanned letters from all consultants confirming their roles in the project. Letters should include the rate/charge for consulting services. If this information is not applicable to the grant proposal, indicate by writing "N/A" in this section. *Limit is four pages.*

K. Survey Instruments (Optional)

Include scanned copies of any survey instruments that will be used in this section of the body. *No page limit; be concise.*

10. Budget

A. Budget Form Instructions

Click on the online menu link called *Application Form Templates* to download the Budget Form. Complete all required information and obtain the signature of the designated Administrative Official. It is NOT necessary to obtain a signature from the Department of Health at this time. Specific instructions for completing the form are included below. Once completed, convert the signed document into a single PDF file and upload it into the online application by clicking on the *Core Application Documents* menu link and then clicking the upload button for Budget. *Limit is six pages.*

An example of the Budget Form is included in [Appendix D](#).

The contents of the Budget Form will be used to establish the official budget for the grant, if awarded.

When preparing your proposed budget, consult the guidelines contained in [Part II, Chapter 7](#) for Allowed and Disallowed Costs. Complete the heading information on every page. Leave the DOH Grant ID field blank. This will be used later if the application is awarded.

B. Budget – Page One

The first page of the Budget Form breaks down the total amount of project costs by budget category. **Each entry must be directly related to the project.** You may find it easier to complete the Budget Narrative/Justification page (page 2) of the Budget Form first.

Complete the heading information. Leave the DOH Grant ID field blank. This will be used later if the application is awarded.

Personnel: Describe personnel information as indicated.

Name: Starting with the Principal Investigator, list the names of all applicant organization employees who will be involved in the project during the first year of the grant, regardless of whether salary is requested. Include all collaborating investigators, individuals in training, and support staff. Do not include consultants or consortium personnel in this description. Use “TBA” (to be announced) for any necessary positions, other than key personnel, for which an appointment has not yet been made. In cases where an individual’s appointment is divided into academic and summer segments, please explain and provide calculations in the narrative section.

Role on Project: Identify the role of each individual.

Type Appointment (months): Indicate whether the base salary is a 9-month salary or a 12-month salary.

Percent Effort on Project: For each individual or position, list the percent of time to be spent by each person on this project even if no salary is requested. *Percent effort must be greater than or equal to the percent of salary requested.*

Percent Salary on Project: For each individual or position, list the percent of base salary requested for this project. *Percent salary requested cannot exceed percent effort on the project.*

Institution Base Salary: List the annual base salary (without fringe benefits) for each individual or position. The maximum annual institutional base salary used for calculations for project salary for any personnel named on the application for this grant must not exceed the Executive Level 1 annual salary rate of the Federal Executive Pay Scale that is in effect as of the application submission date. See [Part II, Chapter 10](#), Definitions, for more information about the Federal Executive Pay Scale. This salary cap is exclusive of fringe benefits, facilities and administrative (F&A) expenses, and excludes any income that an individual may be permitted to earn outside of the duties to the applicant organization. This provision is consistent with NIH salary limitations on grants, cooperative agreements, and contracts.

Salary Requested: List the total salary requested (without fringe benefits for the total funding period) for each position. *The percent FTE salary support requested cannot exceed the percent of effort on the project.*

Fringe Benefits: State the total fringe benefits for each position.

Total Amount Requested: List the totals (total salary with fringe benefits for the total funding period) for each individual or position (cannot exceed percent effort).

In the next section of this page, provide the budget amount requested for each category listed. If project income is anticipated, indicate the amount. The budget amounts should match the corresponding budget narrative/justification section.

C. Budget Narrative/Justification

Provide a narrative justification for each budget category for the project costs by describing why it is needed and how it is related to the project. Where appropriate, include details that show how the estimated cost was calculated. Use additional sheets as necessary.

Personnel: Provide the names of all personnel and their roles on the project. Describe their responsibilities on the project. Further explain salary and effort figures from the Personnel Table in the Budget if clarification is needed. In cases where an individual's appointment is divided into academic and summer segments, please explain and provide calculations.

Consultant Costs: Provide the names of any consultants, their roles on the project, business location where services will be performed, and the total amount requested. Whether or not costs are involved, provide the names and organizational affiliations of all consultants, other than those involved in consortium/contractual arrangements. Include consultant physicians in connection with patient care and persons who serve on external monitoring boards or advisory committees to the project. Describe the services to be performed. Include the number of days of anticipated consultation, the expected rate of compensation, travel, per diem, and other related costs.

Consortium/Contractual Costs: List each consortium and/or contractual arrangement, the total dollar amount, business location (city and state), and provide justification. If awarded, each participating consortium/contractual organization may be required to submit a separate detailed budget for the appropriate period at a later date.

Any consortium arrangements may involve personnel costs, supplies, and other allowable costs, including indirect costs. Contractual costs for support services, such as laboratory testing of biological materials, clinical services, or data processing, are occasionally sufficiently high to warrant a similar categorical breakdown of costs.

Consortium indirect costs are limited to 15%. The institution and the consortium/contractor cannot both charge indirect costs on the consortium/contractor direct costs; one or the other may charge indirect costs. Funding for any out-of-state personnel or consulting expenses cannot exceed 10% of the total requested direct costs. This out-of-state limitation does not include lab services, supplies, or equipment.

Equipment: List each item separately, with dollar amount, and justify each purchase. Property and equipment are defined as non-expendable, tangible property having a useful life of more than one year. Although there is no specific budget limit for purchasing equipment, excessive equipment budgets will be scrutinized.

Supplies: Itemize supplies (with costs) in separate categories, such as glassware, chemicals, radioisotopes, etc. Categories in amounts less than \$1,000 do not have to be itemized. If animals will be purchased, state the species and the number to be used. Note: animal maintenance costs should be included in the Other Expenses category, not Supplies. Although there is no specific budget limit for purchasing supplies, excessive supplies budgets will be scrutinized.

Travel: Itemize domestic travel requests and provide justification. Provide the purpose and destination of each trip and the number of individuals for whom funds are requested. Travel of a reasonable amount (\$1,800 per year, per traveler) may be proposed to attend conferences and similar meetings in the scientific field(s) of endeavor. TTF and TTCP Grants are limited to two travelers (trips) per year. International travel is not allowed.

Patient Care Costs: If inpatient and/or outpatient costs are requested, list them and provide the names of any hospitals and/or clinics and the amounts requested for each. State whether each hospital or clinic has a currently effective DHHS-negotiated research patient care rate agreement, and if not, what basis is used for calculating costs. If the hospital or clinic does not have a DHHS-negotiated rate, a provisional rate can be approved. Indicate, in detail, the basis for estimating costs in this category, including the number of patient days, estimated cost per day, and cost per test or treatment. If both inpatient and outpatient costs are requested, provide information for each separately. If multiple sites will be used, provide detailed information by site.

Include information regarding projected patient accrual for the project/budget periods and relate this information to the budget request for patient care costs. If patient accrual will be lower at the start or during the course of the project, plan budget(s) accordingly.

Provide specific information regarding anticipated sources of other support for patient-care costs, e.g., third-party recovery or pharmaceutical companies. Include any potential or expected utilization of General Clinical Research Centers.

Other Expenses: Itemize any other expenses by category and unit cost. These might include animal maintenance (unit care costs and number of care days), patient travel, donor fees, publication costs, computer charges, rentals and leases, equipment maintenance, service contracts, tuition remission, and Department of Health (DOH) IRB fees (if applicable). Provide justification of these costs. All items listed in this category must meet the definition of direct costs.

Project Income: If project income is anticipated, provide detailed information and justification.

11. Biographical Sketches

This section must contain the biographical sketches of all individuals identified as key personnel within the Key Personnel section of the application including the Principal Investigator (for TTF and TTCP applications) and the project leader of the partnering entity (for TTCP applications). Each biographical sketch must use the current National Institutes of Health biographical sketch format (with personal statement) found at <http://grants1.nih.gov/grants/funding/phs398/phs398.html#forms>. Convert all the biographical sketches into a **single** PDF file and upload it into the online application by clicking on the *Core Application Documents* link and then clicking the upload button for Biographical Sketch. *Limit is four pages per person.*

12. Research Milestone Chart

All applications require a Research Milestone Chart that provides a high-level overview of the anticipated project schedule with references to the major aims, tasks, and experiments planned for the research/project. Leave the DOH Grant ID field on the form blank. An example Research Milestone Chart form is located in [Appendix E](#). Instructions are included in the Research Milestone Chart form. An example of a completed form is also included in [Appendix E](#).

Click on the online menu link called *Application Form Templates* to download the Research Milestone Chart Form. Instructions are included in the Milestone Chart form. An example of a completed Milestone Chart is also available for download. Once completed, convert the Microsoft Excel™ document into a **single** PDF file and upload it into the online application by clicking on the *Core Application Documents* menu link and then clicking the upload button for Research Milestone Chart. *Limit is two pages.*

13. Other Support

Click on the online menu link called *Application Form Templates* to download the required Other Support Form. Include all additional current and pending support (including institutional support such as recruitment packages) for the Principal Investigator (for TTF and TTCP applications) and the project leader at the small business partner entity (for TTCP applications). Once completed, convert the document into a **single** PDF file and upload it into the online application by clicking on the *Core Application Documents* menu link and then clicking the upload button for Other Support. *No page limit*.

See [Appendix F](#) to see an example of the Other Support Form.

Other Support information assists peer reviewers and Program staff in the identification and resolution of potential overlap of support. **Overlap, whether scientific or financial, or commitment of an individual's effort greater than 100%, is not permitted.** The goals in identifying and eliminating overlap are to ensure that sufficient and appropriate levels of effort are committed to the project; that there is no duplication of funding for scientific aims, specific budgetary items, or an individual's level of effort; and that funds not otherwise necessary for the approved project are not included in the award. See [Part II, Chapter 10](#) for definitions of Financial Overlap, Commitment Overlap, and Scientific Overlap.

Instructions for Other Support Report form fields:

Principal Investigator: The Principal Investigator is the individual designated by the applicant organization to direct the project to be supported by the grant.

Project Title: Indicate the title of the project being entered for consideration.

Institution: Indicate the university or institution.

Date: Enter the current date.

PI Percent Effort on Non-Research Activities (teaching, mentoring, etc.) at the Institution: Indicate the Principal Investigator's percent effort on non-research activities such as teaching, clinical work, mentoring, or administrative responsibilities at the institution.

Section A:

The rest of the form consists of as many Section A's as are required to completely report the instances of Other Support for the Principal Investigator (for both TTF and TTCP applications) and the project leader at the eligible small business (for TTCP applications). A sample completed Section A is included in the body of the form.

Name of Key Person: Name of the key individual associated with the other support being described.

Role in the Bankhead-Coley Project: Indicate the role of this person on the TTF or TTCP Grant.

Grant Number: Enter the code or identifier for the project assigned by the funding organization. If this is a pending proposal, enter N/A.

Dates of Grant: Indicate the inclusive dates of the project as approved/proposed. For example, in the case of NIH support, provide the dates of the approved/proposed grant.

Source: Identify the agency, institute, foundation, or other organization that is providing the support.

Total Annual Costs: In the case of an active project, provide the current year's total budget amount (sum of direct and indirect costs). For a pending project, provide the proposed total budget amount (sum of direct and indirect costs) for the initial budget period.

Grant Status: Indicate the status of the award, such as applied for, pending, or active.

Your Role on this Project: Identify the role of this person for the other support project being reported.

Total Annual Direct Costs: Provide the current year's direct costs. For a pending project, provide the proposed direct cost amount for the initial budget period.

Percent Effort: For an active project, provide the level of effort (even if unsalaried) as approved for the current budget period. For a pending project, indicate the level of effort as proposed for the initial budget period. In cases where an individual's appointment is divided into academic and summer segments, indicate the proportion of each devoted to the project.

This Project PI: Identify the principal investigator for the other support project being reported.

Percent Salary: For an active project, provide the percent of salary paid for the current budget period. For a pending project, indicate the percent of salary as proposed for the initial budget period. In cases where an individual's appointment is divided into academic and summer segments, indicate the proportion of each devoted to the project.

Title of Project: Provide the exact title of the funded or proposed "other" project.

Major Project Goals: Provide a brief statement of the overall objectives of the project, subproject, or subcontract.

Overlap Status: Summarize any potential scientific, financial, or time commitment overlap with active or pending projects and this application. If there is no overlap, state this. Any necessary resolution of overlap due to this application being funded will be arranged with the applicant prior to award.

14. Tech Transfer Support Form (TTF Applications Only)

A **Technology Transfer Support Form** from an eligible technology transfer advisor/officer must be provided. The questions on the form are self-explanatory. Click on the online link called *Application Form Templates* to download the required Tech Transfer Support Form. Once completed, convert the signed document into a **single** PDF file and upload it into the online application by clicking on the *Core Application Documents* link and then clicking the upload button for Tech Transfer Support Form. See [Appendix G](#) for an example copy of the Tech Transfer Support Form. *Limit is six pages.*

For purposes of this program, **eligible technology transfer advisors** shall consist of staff members of the technology transfer office associated with the applicant institution, or if no such office exists, an individual whose official job responsibilities include traditional technology transfer responsibilities.

15. Partner Letter of Support (TTCP Applications Only)

All TTCP projects must include a signed *Letter of Support*, from the collaborating eligible small business.

The eligible small business letter must contain:

- A statement of intent to collaborate with the eligible institution
- A brief description of the responsibilities, roles, and contributions that will be provided by the small business
- A statement of the percent of work/effort that will be performed by the small business
- A description of its type of business entity, as defined in section 606.03(1); *F.S.*, Federal Entity Identification Number (FEIN) or in place of that, a Dun and Bradstreet (DUNS) number
- An attestation that the small business meets the criteria for eligibility at the time of application.

Scan or convert the **signed** Partner Letter of Support into a single PDF file, and upload the PDF file where indicated by clicking on the *Core Application Documents* link and then clicking the upload button for the Partner Letter of Support. *Limit is four pages.*

16. Certificate of Status or Authorization from Division of Corporations (TTCP Applications Only)

All TTCP applications must include a copy of the eligible small business's Certificate of Status or Authorization from the Division of Corporations, Florida Secretary of State; or any other certifications from the Secretary of State resulting from the requirements of Chapter XXXVI, Business Organizations, *F.S.*; or in place of either of those above, a county business license.

To complete this section, scan or convert the Certificate of Status or Authorization to a **single** PDF file, and upload the PDF file into the online application by clicking on the *Core Application Documents* link and then clicking the upload button for Certificate of Status. *No page limit.*

17. Miscellaneous Letters of Support (Optional)

Miscellaneous letters of support are optional and can be uploaded in this section. Letters of interest from potential commercial partners or investors and letters of commitment of funds or other resources that will enhance the likelihood of commercialization should be included.

Scan or convert copies of all letters into a **single** PDF file, and upload the file into the online application by clicking on the *Core Application Documents* link and then clicking the upload button for Miscellaneous Letters of Support. *No page limit.*

18. Cover/Certification – Signed Page 1

Click on the *Print Forms* link on the upper right side of the online application, then click the link below the heading "*Application form(s)*" to generate and print a PDF document displaying the information you entered online. Review this information carefully. If you want to make modifications, change your entries within the online application.

The Principal Investigator and designated Organization Official (the individual entered in "Administrative Official for Applicant Organization" section of the online application) **MUST** sign the first page of the printed application to show agreement with the listed certifications. **These certifications apply to all information contained on ALL required sections of the application.**

After obtaining the appropriate signatures, scan this first signed page **ONLY** into a PDF formatted document and upload it into the online application by clicking on the *Core Application Documents* menu link and then clicking the upload button for Cover/Certification Page.

19. IRB and IACUC Approvals

A. IRB Assurance Information (Human Subjects Used)

This section only applies if the research involves the use of human subjects.

1. **Exemption Number:** If human subjects are to be used in your research but an approval exemption applies, enter the exemption number provided by your local IRB, if it is available.
2. **Review Status:** If approval has already been received for the proposed research from your institutional IRB, indicate whether the approval was granted by a full IRB review or an expedited review.
3. **IRB Approval Date:** Enter the date the IRB was approved, if available.
4. **Effective and End Dates:** Enter the dates the IRB approval became effective, as well as the date of its expiration, if available.
5. **Assurance of Compliance:** Identify the compliance number associated with the IRB Assurance, if available.
6. **Department of Health Clients, Employees or Facilities:** Does your project involve Florida Department of Health clients, employees, or facilities? Check either "Yes" or "No."

IRB approvals are not required at the time of application; however, if available please upload the approvals. Convert all IRB approval documents into a single PDF file and upload it into the online application by clicking on the *IRB Approval* upload button. The IRB approval must have the same project title as the application project title and must be signed by the IRB chairperson.

Note that the DOH IRB has agreements with several eligible institutions in order to simplify the IRB process when dual IRB approvals are required. Check with the DOH IRB for more information.

B. IACUC Assurance Information (Vertebrate Animals Used)

This section only applies if the research involves the use of animal subjects.

1. **Review Status:** Check the appropriate status box for the IACUC approval.
2. **IACUC Approval Date:** Enter the date that Animal Welfare Assurance approval was received, if available.
3. **Assurance of Compliance:** Enter the Animal Welfare Assurance number associated with the IACUC Assurance, if available.
4. **Effective and End Dates:** Enter the dates the IACUC approval became effective, as well as the date of its expiration, if available.

IACUC approvals are not required at the time of application; however, if available please upload the approvals. Convert all IACUC approval documents into a single PDF file and upload it into the online application by clicking on the *IACUC Approval* button. The IACUC approval(s) must have the same project title as the application project title and must be signed by the IACUC chairperson.

PART IV. AFTER APPLICATION SUBMISSION

1. Changes to a Submitted Application

It is the responsibility of the applicant to ensure that a complete application is submitted before the date and time specified in [Table 1 of Part I, Chapter 4](#). The Program does not allow submitted application files or data to be replaced or changed after the submission deadline. This decision will help ensure no applicants receive an unfair advantage. Before submitting your application, please check it for completeness, accuracy, quality, and readability. This should include verifying that all graphic elements, including tables, charts, and images, converted properly when saving the original documents in PDF format as required.

If you submit your application and want to change the application before the submission deadline, contact Technical Support (identified in [Part II, Chapter 8 B](#)) for assistance.

2. Evaluation of Applications

The Program will use a multi-step evaluation process before making award determinations for all applications submitted in response to this Open Call for Grant Applications. The Program will consider the outcome of each of these evaluation steps in making final funding recommendations to the Florida State Surgeon General.

A. Administrative Review

Application materials not received according to the date, time, and location specified in [Table 1 of Part I, Chapter 4](#) will be disqualified.

Each application submitted by the deadline indicated in [Table 1 of Part I, Chapter 4](#) will receive an administrative review verifying mandatory eligibility requirements and the completeness of the application. The administrative review does not include review of the overall scientific impact.

Any application failing to meet all administrative requirements may be ruled ineligible for funding in response to this Open Call for Grant Applications and not entitled to further consideration. However, the Program may peer review ineligible proposals in order to provide feedback to the applicant, which may be useful in competing for future funding opportunities.

The Program reserves the right to disqualify any and all applications or to waive minor irregularities when doing so would be in the best interest of the State of Florida. A minor irregularity is defined as a variation from the specifications of this Open Call for Grant Applications that does not give any applicant an advantage or benefit not enjoyed by other applicants, does not affect the cost of the application, nor adversely affects the interests of the State. At its option, the Program may correct minor irregularities, but is under no obligation to do so.

B. Peer Review

Program peer reviewers will assess the overall impact of all qualified/eligible applications, and at the discretion of the Program may assess some ineligible/disqualified applications. Peer review panels will be comprised of reviewers with expertise in the substance and methodology of the proposed project. Individual reviewers will review and rate applications, including assessing cancer-relatedness, examining budget requests, and recommending the level of support necessary to complete the work. Reviewers will be nationally prominent individuals drawn from various sectors in the life sciences including universities, government agencies, and industry. Reviewers will be located outside of Florida and will not be associated with any Florida-based public or private entity working in the life sciences. Before being granted access to proposals, every reviewer will be required to accept the terms of a Confidential Nondisclosure Agreement and will receive instructions on the avoidance of conflict-of-interest. Reviewers will receive honoraria for their participation and are expected to set a high standard for scientific excellence. The number and composition of peer review panels will be determined by the number and scientific range of applications received.

Overall Impact Score:

Similar to the National Institutes of Health, peer reviewers will use a standard rating format:

- (1) Exceptional – Exceptionally strong with essentially no weaknesses
- (2) Outstanding – Extremely strong with negligible weaknesses
- (3) Excellent – Very strong with only some minor weaknesses
- (4) Very Good – Strong but with numerous minor weaknesses
- (5) Good – Strong but also at least one moderate weakness
- (6) Satisfactory – Some strengths and some moderate weaknesses
- (7) Fair – Some strengths but with at least one major weakness
- (8) Marginal – A few strengths and a few major weaknesses
- (9) Poor – Very few strengths and numerous major weaknesses

Qualified/eligible applications will be assigned to five independent peer reviewers. At least two of the reviewers will have experience with commercialization and business plans and at least two of the reviewers will have expertise in the appropriate science. Each reviewer will submit their independent ratings and comments online to the Lytmos Group. During the evaluation process, reviewers will not be able to see critiques by the other reviewers assigned to the same or other application(s). For each application, the high and low overall impact scores will be dropped and the remaining scores will be averaged to determine the overall score. Peer reviews will be finished within 60 days after application submission, after which time the reviewers will be able to see only the final evaluation reports for the applications they evaluated.

Peer reviewers will rate all TTF and TTCP proposals for overall impact and business/commercial feasibility on the following criteria:

- Significance: the importance of the topic being addressed and the project's commercial potential.
- Investigators: the qualifications of the key personnel contributing to the project.
- Innovation: the potential for the project to shift current paradigms.
- Approach: the appropriateness of the planned strategy, methodology, and analyses.
- Environment: the suitability of institutional support, equipment, and physical resources.

Other Review Considerations:

Reviewer concerns regarding protection of human and/or animal subjects will be considered.

Separately, peer reviewers will rate the relationship of the project to the advancement toward prevention, diagnosis, treatment, and/or cure of cancer. Peer reviewers will be asked the question "Has the applicant made a compelling case for a strong cancer relationship?" Cancer-relatedness will be rated using a five-point scale: (1) Definitely, (2) Yes, minor reservations, (3) Somewhat, (4) Minimally, and (5) Not at all. The cancer-relatedness ratings of all reviewers will be averaged to determine the overall score for cancer-relatedness.

Peer reviewers will also identify any concerns regarding the proposed budget or apparent scientific or budgetary overlap with active or pending support.

Peer reviewers only have access to the online application and do not receive applications in paper format.

Questions that will be used by the peer reviewers are available on the Program website at www.floridabiomed.com/bc_call.

C. Programmatic Review

The Department and the Florida Biomedical Research Advisory Council will consider the Program federal peer review scores/rankings and Program scores regarding cancer-relatedness in a manner that is blind to investigator and institutional identities. Other programmatic interests, such as the balance of support among grant mechanisms, the availability of funds, and Program goals and preferences, will be used to form a funding recommendation to the State Surgeon General. Applications with a high overall impact may be excluded from the list of recommended projects for programmatic reasons including the relevance of the research to cancer. (See [Part II, Chapter 1](#) for cancer-relatedness description.)

D. Evaluation Reports

For all eligible and qualified applications, the evaluation report will be available online to the applicant on or around the dates indicated in [Table 1 in Part I, Chapter 4](#). To access the evaluation report, the applicant must log in at www.floridabiomed.com using the same log in username and password used for the application process.

3. Notification of Funding Decision

The applicant organization and Principal Investigator will receive written notification of the funding decisions as indicated in [Table 1 in Part I, Chapter 4](#). Applications deemed fundable but not awarded due to budget limitations will remain active for one year from the date of submission. The Program may fund these applications if monies become available. Prior to making an award decision, the Department may ask applicants to update and verify their application. This additional information shall in no way alter or extend the one-year criterion.

4. Requests for Re-Consideration

All funding decisions of the State Surgeon General are final. After receiving the peer review report, the applicant may request a reconsideration by submitting a written statement outlining the substantive concern(s) and basis for the request. This written statement must be submitted by E-mail to bcprogramsupport@floridabiomed.com no later than five business days after notification of the availability of the evaluation report.

A subcommittee of the Florida Biomedical Research Advisory Council (with the exception of recused members from the applicant's institution) will consider the merits of the complaint, and when warranted by apparent deficiencies in the peer review, may order a reconsideration. The Program will provide a written response to the Principal Investigator containing the outcome of this process.

If the application is granted a reconsideration, the new peer review scores will be used to reposition it in the rank-ordered list of all unfunded applications. Based on the new peer review scores and availability of funds, the application will be classified either as funded, fundable but unfunded, or unfundable. Note that while a reconsideration may lead to funding, it could also result in a lower ranking. Reconsideration results are final.

5. Grantee Requirements

A. Terms and Conditions

After awards are made, each grantee must sign a contract, called the “Terms and Conditions,” agreeing to certain legal requirements of the award. An example of the “Terms and Conditions” is located on the Program website and can be accessed by clicking on the following link: Terms and Conditions (www.floridabiomed.com/bc_call). The “Terms and Conditions” are non-negotiable and acceptance is required as part of the grant award process. The Program reserves the right to change or modify the “Terms and Conditions” as needed. The “Terms and Conditions” include the post-award schedule of deliverables.

Additionally, this Program is a state program, and therefore all grantees are recipients/sub-recipients of state financial assistance.

B. Grantee Reporting Requirements

If the applicant’s proposal is funded, the Grantee must respond to Program requests for information for a period of five (5) years after the end of the grant period, including any no cost extensions. The requested information may include long-term outcomes based on the funded project, including the value of additional grant awards for cancer-related research, a list of cancer-related presentations, a list of cancer-related publications in peer-reviewed journals, commercialization results and any invention disclosures, patent filings, patents received, et cetera.

Refer to the Program website at www.floridabiomed.com/bc_call to review the “Terms and Conditions,” which includes the full post-award deliverable schedule.

C. Open Innovation and Sharing of Publication-Related Materials, Data, and Software

Publishing a scientific paper is a transaction whereby the author(s) receive credit and status in exchange for sharing their scientific findings. Authors have a responsibility to make available materials, databases, and software integral to their findings so that others may validate or refute the results and/or extend them in new directions. Grantees funded through this Program are encouraged to use materials transfer agreements to make materials, data and databases, and software that result from this funding and which is integral to their research findings, freely and promptly available upon request for research use by other scientists.

In accord with the National Institutes of Health notice NOT-OD-08-033, Grantees shall submit or have submitted for them to the National Library of Medicine’s PubMed Central an electronic version of their final, peer-reviewed manuscripts upon acceptance for publication, to be made publicly available no later than 12 months after the official date of publication, in a manner consistent with copyright law. This applies to all publications resulting from Program funded projects/research. For more information on the NIH Open Access Policy visit <http://publicaccess.nih.gov/>.

APPENDIX A. REDUCING PDF FILE SIZES

Below are some tips on reducing file sizes to meet Program application file size limitations.

- a. Compress images in the original Microsoft Word™ file before converting to PDF.

Embedded high-resolution images often lead to very large file sizes when a document is converted to PDF. To reduce file sizes prior to conversion, while in Microsoft Word™:

- Right click on the image and select “Format Picture.”
- Select the “Compress” button.
- Select “Apply to > All pictures in document” and “Change resolution > Web/Screen.” Click “OK.”

Check key images to make sure they are still clear enough for reviewers to interpret as they read your proposal. If not, Choose “Undo Compress Pictures” or selectively reinsert images at the lowest possible clear resolution, and use one or more of the next options for managing the overall size of your file.

- b. Compress a PDF file with Reduce File Size

Reduce the PDF file size with the “Reduce Files Size” feature in Adobe Acrobat™. After completing this step make sure the file is still readable and includes everything intended.

- In Adobe Acrobat™, go to “File > Reduce File Size.” or go to “File > Save As > Reduced Size PDF.”

Note: This function may be under a different menu option depending on the version of Adobe Acrobat™.

- c. Reduce PDF file size with ‘Save As’ rather than ‘Save’

Saving PDF files adds incremental updates to the original document, meaning any changes that you make to a document are appended to the end of the file without doing a complete rewrite. This is why the Save feature is much faster than a Save As, and also why PDF files saved this way can become very large. The Save As feature will rewrite the entire file and provide you with a smaller file size.

- In Adobe Acrobat™, go to “File > Save As.”

- d. Re-create the PDF to reduce PDF file size

A method of reducing PDF file size is to re-create the PDF by removing many unwanted objects, removing tags, and further compressing images. Any tool that supports ‘print to PDF’ functionality will allow this. Once again, check the clarity of key images to make sure they still add value to the proposal.

e. Remove unwanted objects

For the greatest control of objects that are removed in the conversion process, such as bookmarks, links, annotations, form fields, JavaScript, Named Destinations, and embedded fonts, use optimizing features within the PDF software. After completing this step make sure the file is still readable and includes everything intended.

- In Adobe Acrobat™, go to “Advanced > PDF Optimizer,” or go to “File > Save As > PDF Optimizer,” choose the objects to remove, and click “OK.”

APPENDIX B. TTF MAIN APPLICATION BODY FORM

Principal Investigator: _____



CANCER RESEARCH PROGRAM TECHNOLOGY TRANSFER FEASIBILITY (TTF) GRANT APPLICATION

SECTION G. TABLE OF CONTENTS

Section	Page Number
Section G. Table of Contents	6
Section H. Resources	
Section I. Introduction of Resubmitted Application (if applicable)	
Section J. Research/Project Plan	
Section J1. Specific Aims	
Section J2. Background & Significance	
Section J3. Commercial Potential	
Section J4. Preliminary Studies	
Section J5. Research/Project Design & Methods	
Section K. Literature Cited	
Section L. Human Subjects (if applicable)	
Section M. Vertebrate Animals (if applicable)	
Section N. Consultants (if applicable)	
Section O. Survey Instruments (optional)	

NOTES

- ← Refer to the Open Call for Grant Applications for page limitations and instructions.
- ← Number pages consecutively at the bottom throughout the application. Do not use suffixes such as 3a, 3b.
- ← The name of the Principal Investigator must be on the top right-hand corner of each page.
- ← Complete each section below.

Principal Investigator: _____

SECTION H. RESOURCES

SECTION I. INTRODUCTION TO RESUBMITTED APPLICATIONS

SECTION J. RESEARCH/PROJECT PLAN

SECTION K. LITERATURE CITED

SECTION L. HUMAN SUBJECTS

SECTION M. VERTEBRATE ANIMALS

SECTION N. CONSULTANTS

SECTION O. SURVEY INSTRUMENTS

Example

APPENDIX C. TTCP MAIN APPLICATION BODY FORM

Principal Investigator: _____



**BIOMEDICAL RESEARCH PROGRAM
TECHNOLOGY TRANSFER/
COMMERCIALIZATION PARTNERSHIP
(TTCP) GRANT APPLICATION**

SECTION H. TABLE OF CONTENTS

Section	Page Number
Section H. Table of Contents	6
Section I. Alternative Funding Challenges	
Section J. Resources	
Section K. Introduction to Resubmitted Application (if application)	
Section L. Research/Project Plan	
Section L1. Specific Aims	
Section L2. Background & Significance	
Section L3. Commercial Potential	
Section L4. Preliminary Studies	
Section L5. Research/Project Design & Methods	
Section M. Partnership Information	
Section N. Literature Cited	
Section O. Human Subjects (if applicable)	
Section P. Vertebrate Animals (if applicable)	
Section Q. Consultants (if applicable)	
Section R. Survey Instruments (optional)	

NOTES

- ← Refer to the Open Call for Grant Applications for page limitations and instructions.
- ← Number pages consecutively at the bottom throughout the application. Do not use suffixes such as 3a, 3b.
- ← The name of the Principal Investigator must be on the top right-hand corner of each page.
- ← Complete each section below.

Principal Investigator: _____

SECTION I. ALTERNATIVE FUNDING CHALLENGES

SECTION J. RESOURCES

SECTION K. INTRODUCTION TO RESUBMITTED APPLICATION

SECTION L. RESEARCH/PROJECT PLAN

SECTION M. PARTNERSHIP INFORMATION

SECTION N. LITERATURE CITED

SECTION O. HUMAN SUBJECTS

SECTION P. VERTEBRATE ANIMALS

SECTION Q. CONSULTANTS

SECTION R. SURVEY INSTRUMENTS

Example

APPENDIX D. BUDGET FORM



Bankhead-Coley Cancer Research Program Application Budget Form for TTF/TTCP Grants

PI Name: _____ **DOH Grant ID:** _____
Institution: _____
Time Period **From:** _____ **To:** _____

PERSONNEL (applicant organization only)		TYPE APPT. (months)	% EFFORT ON PROJECT	% SALARY REQUESTED	INST. BASE SALARY	DOLLAR AMOUNT REQUESTED (omit cents)		
NAME	ROLE ON PROJECT					SALARY REQUESTED	FRINGE BENEFITS	AMOUNT REQUESTED
	Principal Investigator							
<i>SUBTOTALS – PERSONNEL</i>								

CONSULTANT COSTS		AMOUNT REQUESTED
CONSORTIUM/CONTRACTUAL COSTS		
EQUIPMENT		
SUPPLIES		
TRAVEL		
PATIENT CARE COSTS	INPATIENT	
	OUTPATIENT	
OTHER EXPENSES		
<i>TOTAL DIRECT COSTS</i>		
INDIRECT COSTS (limited to 15% of direct costs)		
<i>TOTAL AMOUNT REQUESTED</i>		
PROJECT INCOME (itemize by category)		

Signature, Director, Sponsored Research

Date

Approved, DOH Program Administrator

Date

DOH 06/10

BUDGET NARRATIVE/JUSTIFICATION

PI Name: _____

Justify each entry by describing how it is related to the project. Where appropriate, include details that show how the estimated cost was calculated. Use additional sheets as necessary.

Personnel

Consultant Costs

Consortium/Contractual Costs

Equipment

Supplies

Travel

Patient Care Costs

Other Expenses

Project Income

DOH 06/10

EXAMPLE OF A RESEARCH MILESTONE CHART WITH DATA

Bankhead-Coley Cancer Research Program Research Milestone Chart - Example



DOH Grant ID: _____		Principal Investigator: Jane Doe		Status Date: 7/15/2010															
Project Title: _____		The Role of _____																	
		Year 1				Year 2				Year 3									
A	B	C	Q1		Q2		Q3		Q4		Q1		Q2		Q3		Q4		
			Planned	Actual	Planned	Actual	Planned	Actual	Planned	Actual	Planned	Actual	Planned	Actual	Planned	Actual	Planned	Actual	
Aim/Task/Experiment ▼		Estimate Duration for each task	Percent Complete	Q1		Q2		Q3		Q4		Q1		Q2		Q3		Q4	
AIM 1. Short aim description				4 months	0%	0	0	50%	40%	40%	10%								
1. task description		6 months	70%	10	30	30%	10%	10%	10%										
2. task description		3 months	50%	30	30	10%	10%	10%	10%										
AIM 2. Evaluate the effects of.....		2 months	15%	0	0	10%	10%	10%	5%	10%	10%	10%	10%	10%	10%	10%	10%	10%	10%
1. Explore the optimal.....			0%	0	0	0	0	0	0	0	0	0	0	0	0	0	0	0	0
2. Analysis of EC growth on various biomaterials			0%	0	0	0	0	0	0	0	0	0	0	0	0	0	0	0	0
AIM 3. Perform an information theory analysis of.....			0%	0	0	0	0	0	0	0	0	0	0	0	0	0	0	0	0
1. Develop a grid-computing system.....		6 months	0%	0	0	0	0	0	0	0	0	0	0	0	0	0	0	0	0
2. Data acquisition.....		9 months	0%	0	0	0	0	0	0	0	0	0	0	0	0	0	0	0	0
3. Task description		12 months	0%	0	0	0	0	0	0	0	0	0	0	0	0	0	0	0	0
Other (thing, equip purchasing, etc.)			0%	0	0	0	0	0	0	0	0	0	0	0	0	0	0	0	0
1. Hire research assistant		1 month	100%	100	100	100%	100%	100%	100%										
2. Purchase Olympus BX41 Microscope		1 month	0%	0	0	0	0	0	0	0	0	0	0	0	0	0	0	0	0
Add additional rows as needed.																			
A		B	C	Q1		Q2		Q3		Q4		Q1		Q2		Q3		Q4	
Clinical Studies		Planned Total Required for Study	Actual Participants	Planned	Actual	Planned	Actual	Planned	Actual	Planned	Actual	Planned	Actual	Planned	Actual	Planned	Actual	Planned	Actual
Subject Contacts		495	78	0	0	82	37	82	41	82	82	82	82	82	82	82	82	82	82
Signed Consents		270	41	0	0	45	20	45	21	45	45	45	45	45	45	45	45	45	45
Screening Complete		144	12	0	0	24	12	24	12	24	24	24	24	24	24	24	24	24	24
Enrolled		80	0	0	0	0	0	0	0	0	0	0	0	0	0	0	0	0	0
Dropped		10	0	0	0	0	0	0	0	0	0	0	0	0	0	0	0	0	0
Followup Visit 1		70	0	0	0	0	0	0	0	0	0	0	0	0	0	0	0	0	0
Followup Visit 2		N/A	0	0	0	0	0	0	0	0	0	0	0	0	0	0	0	0	0

APPENDIX F. OTHER SUPPORT FORM

Bankhead-Coley Cancer Research Program		Other Support Update	
DOH Grant ID:		Date:	
Principal Investigator(s):			
Project Title:			
Institution:			
PI Percent Effort on Non-Research Activities (teaching, mentoring, etc.) at the Institution:			
Provide the following information on all active or pending sources of support for research activities for the Principal Investigator, and Mentor/Sponsor (if applicable for grant), using the format indicated here. Repeat Section A for each person and other support. In the overlap status section, address potential financial overlap, scientific overlap and/or effort overlap. Add continuation pages as needed.			
SAMPLE			
Section A			
Name of Bankhead-Coley Key Personnel:	Doe, Jane	Role in the Bankhead-Coley Project:	PI
Grant Number:	R01 HL 00213-10	Dates of Grant:	1/1/2007 – 6/30/2009
Source:	NIH/NHLBI	Total Annual Costs:	\$185,000
Grant Status:	Active	Total Annual Direct Costs:	\$150,000
Your Role on this Project:	PI	Percent Effort:	30%
This Project PI:	Doe, Jane	Percent Salary:	30%
Title of Project:	Chloride and Sodium Transport in Airway Epithelial Cells		
Major Project Goals:	The major goals of this project are to define the biochemistry of chloride and sodium transports in airway epithelial cells and close the genes involved in transport.		
Overlap Status:	There is scientific overlap between Aims 2 of Bankhead-Coley application under consideration and aim 3 of this NIH grant.		
ENTRY FORM			
Section A			
Name of Bankhead-Coley Key Personnel:		Role in the Bankhead-Coley Project:	
Grant Number:		Dates of Grant:	
Source:		Total Annual Costs:	
Grant Status:		Total Annual Direct Costs:	
Your Role on this Project:		Percent Effort:	
This Project PI:		Percent Salary:	
Title of Project:			
Major Project Goals:			
Overlap Status:			
Section A			
Name of Bankhead-Coley Key Personnel:		Role in the Bankhead-Coley Project:	
Grant Number:		Dates of Grant:	
Source:		Total Annual Costs:	
Grant Status:		Total Annual Direct Costs:	
Your Role on this Project:		Percent Effort:	

BC OS1 09/10

APPENDIX G. TECH TRANSFER SUPPORT FORM

Bankhead-Coley Cancer Research Program		Technology Transfer Feasibility (TTF) Application					
		Tech Transfer Advisor Statement of Support					
Principal Investigator:							
PI Institution:							
Project Title:							
Name of Tech Transfer Advisor:							
Title:							
Institution:		Phone Number:					
Department:		Email Address:					
<p>Technology Transfer Advisor Expectations: With this Statement of Support, the named Technology Transfer Advisor is supporting the request made by the Principal Investigator (PI) listed above for a TTF Grant by:</p> <ul style="list-style-type: none"> • attesting that a viable invention disclosure has been made • providing an overview of the development progress and needs of the applicant in transferring the identified technology out of an academic setting • describing the relationship, role, and contribution that s/he will make in assisting with this development <p>This form is a required component of a TTF application. It should be completed by the Tech Transfer Advisor and a signed copy given to the grant applicant for upload into the online application.</p>							
Section A: Project Requirements							
<i>To the best of my knowledge and belief, the status of the subject discovery is described below:</i>							
<table style="width: 100%; border: none;"> <tr> <td style="width: 10%;"></td> <td style="width: 10%; text-align: center;">Yes</td> <td style="width: 10%; text-align: center;">No</td> <td></td> </tr> </table>					Yes	No	
	Yes	No					
1. <input type="checkbox"/> <input type="checkbox"/> The technology or invention is protected or IP protection is being sought.							
2. <input type="checkbox"/> <input type="checkbox"/> Appropriate patent and literature searches have been completed.							
3. <input type="checkbox"/> <input type="checkbox"/> The invention is free from prior public disclosure(s) that would bar patentability or ability to seek IP protection.							
4. <input type="checkbox"/> <input type="checkbox"/> The technology is at a proof of concept stage.							
5. <input type="checkbox"/> <input type="checkbox"/> The technology is the subject of ongoing and proactive research by the scientist.							
6. <input type="checkbox"/> <input type="checkbox"/> Potential products or services from the project have been identified for which there is identifiable market need.							

Section B: Narrative Statements of Support	
Please explain why you are convinced this technology has above-average market potential.	
Explain your brief assessment of the development progress and needs of the applicant in transferring the identified technology out of an academic setting.	
How would a TTF grant advance this technology in a critical way to make it substantially more marketable, assuming the experiment is successful? Why are other sources of funding not available for this purpose?	
Describe your plan for working with the PI on this project, if the grant is awarded, including your role and the degree/type/frequency of interaction.	
(Optional) I wish to bring the following information to the attention of the Program:	
<i>With this Statement of Support, I verify to the best of my knowledge and belief that the proposed project has the status stated above and I endorse this TTF application for funding consideration by the Program.</i>	
<i>Signature of Technology Transfer Advisor (per signature not acceptable)</i>	<i>Date</i>